

FLORIDA DEPARTMENT OF HEALTH-
ORANGE COUNTY



WWW.ORCHD.COM

WWW.ORCHD.MOBI

HealthiestWeight

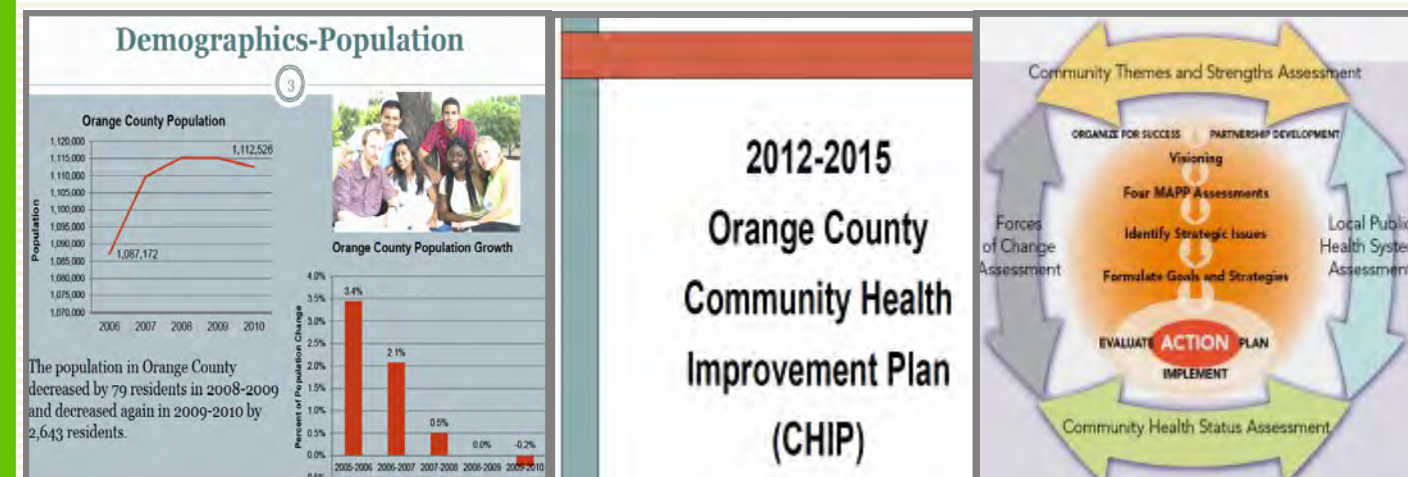
#HealthiestWeightFL

Florida Department of Health-Orange County

Annual Report-2013



Measuring to Succeed





From Our Director
Kevin M. Sherin, M.D., M.P.H., M.B.A
County Health Officer

The focus of the 2013 Annual Report highlights the many ways we are **“measuring for success”**. There are several key steps needed in order for us to accomplish this, including collecting population data from our community. We do this in order to have a more accurate picture of the health of our community. The data we collect allow us to: target resources to areas of greatest need, advocate for investment in local programs and services, and measure the health of our community over time so that we can monitor the progress of short or long-term health outcome objectives.

Measuring public health efforts has a long history that goes as far back as Florence Nightingale in the middle of the 19th century. Ms. Nightingale was concerned about the sanitary conditions in hospitals. She developed an elaborate data collection and statistical analysis system that focused primarily on *in-hospital mortality*.

Today, the importance of measuring our public health efforts is just as critical. We are faced with limited resources that include decreasing funding for public health and the ever increasing rates of chronic disease, obesity, and illness. We must be laser focused to ensure our public health efforts are effectively meeting the needs of our community while demonstrating a measurable return on investment.

Our tools for **“measuring for success”** are plentiful and include the Orange County Community Health Improvement Plan (CHIP), Community Health Assessment (CHA), Healthy Measures for East Central Florida, Florida Community Health Assessment Resource Tools Set, (CHARTS), and Healthy People 2020, just to name a few.

Throughout this Annual Report, you will see many examples of how we are measuring for success. We support and align with the Healthy People 2020 commitment to promoting health, preventing disease and disability, eliminating disparities, and improving quality of life through the 4 foundation health measures. The health measures are (1) Measures of General Health Status, (2) Measures of Health-Related Quality of Life and Well-Being, (3) Determinants of Health, and (4) Measures of Disparities.

It is with gratitude and much appreciation that I thank the staff of the Florida Department of Health in Orange County for their continued dedication and commitment to ensuring the public’s health each and every day.

“The success or failure of any government in the final analysis must be measured by the well being of its citizens. Nothing can be more important to a state than its public health; the state’s paramount concern should be the health of its people.”

—President Franklin D. Roosevelt

OUR MISSION:

To protect, promote & improve the health of all people in Florida through integrated state, county & community efforts.

OUR VISION:

To Be The Healthiest State In The Nation

FLORIDA DEPARTMENT OF HEALTH-ORANGE COUNTY- LOCATIONS

Administration Offices

6101 Lake Ellenor Drive
 Orlando, Florida 32809
 407-858-1400

Apopka Health Center

1111 North Rock Springs Road
 Apopka, Florida 32712
 WIC Program 407-858-1494

Central Health Center

832 W. Central Boulevard
 Orlando, Florida 32805
 407-836-2600
 WIC Program 407-858-1494

Church Street Vital Statistics Office

807 West Church Street
 Orlando, Florida 32805
 407-836-7128

Eastside Health Center

12050 East Colonial Drive
 Orlando, Florida 32829
 WIC Program 407-858-1494
 Women’s Health 407-858-1487

Hoffner Health Center

5449 South Semoran Boulevard
 Orlando, Florida 32826
 Dental 407-254-1925
 WIC Program 407-858-1494

Lake Underhill Health Center

5730 Lake Underhill Road
 Orlando, Florida 32807
 WIC Program 407-858-1494
 Women’s Health 407-254-1487

Lila Mitchell Health Center

5151 Raleigh Street
 Orlando, Florida 32811
 Women’s Health 407-858-1487

Ocoee Health Center

475 Story Road
 Ocoee, Florida 34761
 Healthy Start 407-254-6822

Orlando Health Campus

44 Lake Beauty Drive
 Orlando, Florida 32806
 Vital Statistics Office 407-245-0047

Southside Health Center

6101 Lake Ellenor Drive
 Orlando, Florida 32809
 WIC Program 407-858-1494
 Women’s Health 407-858-1487

West Side Health Center

800 North Mercy Drive
 Orlando, Florida 32808
 WIC Program 407-858-1494
 Environmental Health 407-858-1497

Winter Garden Health Center

1210 East Plant Street
 Winter Garden, Florida 34787
 WIC Program 407-858-1494

MOVING FORWARD



It is only in the last decade that the general public has shown an interest in the role of public health. But as is the nature of most humans, most have little interest in things until they either have made, or have the potential to make a significant impact on our lives.

Such has been the case with the efforts and accomplishments in public health. Only when, as a nation, we began to see emerging diseases, childhood obesity, an increase in chronic disease and illness, and threats from biological agents, did we become more acutely aware of the vital role that public health plays in promoting and protecting the health of our community.

With the challenges of “*doing more with less*”, it becomes more critical than ever for those of us in public health to be able to clearly demonstrate, through a variety of measurements and data collection, how public health efforts are making a difference in the lives of our community.

Our overall goal is to ensure we are meeting the Florida Department of Health mission: “*To protect, promote & improve the health of all people in Florida through integrated state, county, & community efforts*”, and to monitor, evaluate, and analyze our initiatives in meeting this critical public health goal.

It is through the use of measurements and standards that we can best serve our community. By gathering information such as demographic data, burden of disease statistics, environmental factors, access to health care, community resources, and overall population health, we are able to more effectively develop measurable strategies that will have the greatest public health impact.

To help us achieve effective results, we utilize numerous local, state and national measurements and standards. These include: Healthy Measures for East Central Florida, Florida Community Health Assessment Resource Tool Set (CHARTS), Public Health Accreditation Board Standards, and the Robert Wood Johnson Foundation-County Health Rankings and Roadmaps, just to name a few.

Additionally, as we continue our efforts in “*measuring for success*” we will incorporate community needs assessments and quality improvement, and evidence-based performance standards in order to 1) better understand health-related trends that can assist us in identifying new programs and funding sources, 2) identify what services we should be providing to the community to enhance quality of life and, 3) continuously monitor and measure our progress to ensure accountability.

CONTENTS

From The Director

Introduction	2
Mission and Vision	2

Our Health Department

Ten Essential Public Health Services	4
Our Values	4

Community Impact

Potentially Preventable Deaths, U.S.	5
Public Health Accreditation Update	6-7
The Dental Program	8
A Growing Concern	8
Linkage-to-Care	9
Female Empowerment Symposium	9
Importance of Clinical Trials	10
Project SAFE	10
Academic Health Department/Clinical Trial	11-12
Informing the Public	13
Environmental Health Regulatory Activities	14
Asthma-Friendly Childcare Center Project	15
Creating Partnership-Infant Mortality	16
Utilizing the Latest Mobile Technology	17
Winnable Battles	18
Emergency Operations	19
Client Services	20
Client Services by Race/Ethnicity	21
Client Services by Age Group	22
Volunteer Program	23
Orange County STD Snapshot	23
Tracking TB Contacts	24
Protecting the Children	24
Giving Babies a Healthy Start	25
WIC Impact	25
Tobacco	26
Healthiest Weight Florida	27
Promoting Physical Activity	27
Reportable Disease List	28-29
Fit-Friendly Worksite Award	30

Grant Awards

New and Continued Grants	31
--------------------------	----

Awards and Recognitions

NACCHO Awards/ Davis Productivity Awards	32
--	----

Fiscal Responsibility

2012 Budget by Services	33
Consolidated Statement of Operations	34

Moving Forward

	35
--	----

Office Locations

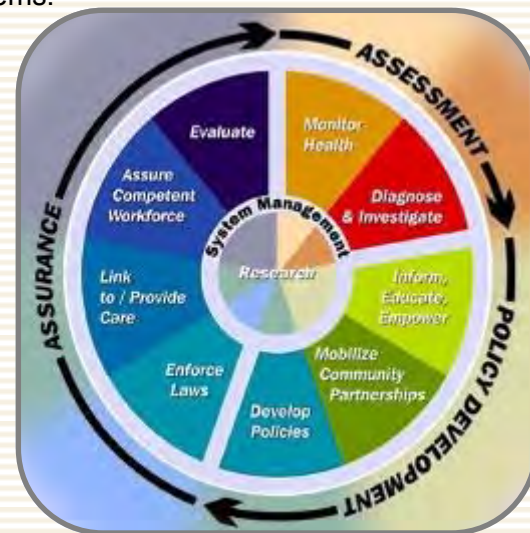
	37
--	----



COMMUNITY IMPACT

Ten Essential Public Health Services

1. **Monitor** health status to identify community health problems.
2. **Diagnose and investigate** health problems and health hazards in the community.
3. **Inform, educate, and empower** people about health issues.
4. **Mobilize** community partnerships to identify and solve health problems.
5. **Develop policies and plans** that support individual and community health efforts.
6. **Enforce** laws and regulations that protect health and ensure safety.
7. **Link** people to needed personal health services and assure the provision of health care when otherwise unavailable.
8. **Assure** a competent public health and personal healthcare workforce.
9. **Evaluate** effectiveness, accessibility, and quality of personal and population-based health services.
10. **Research** for new insights and innovative solutions to health problems.
(SOURCE: Public Health Foundation)



Our Values

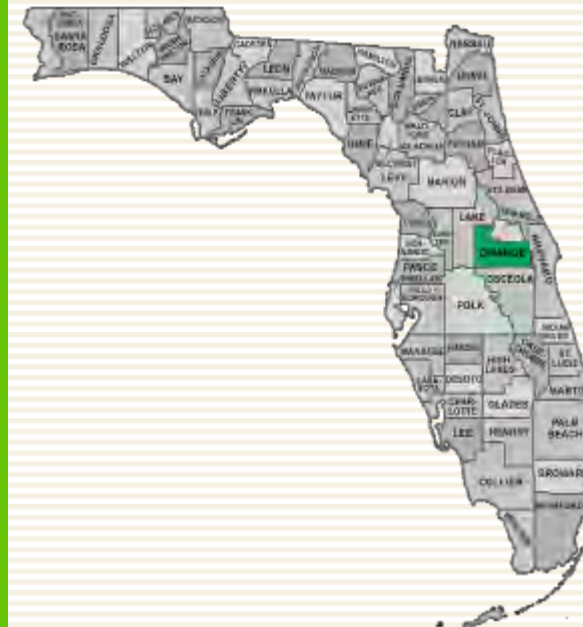
Innovation: We search for creative solutions and manage resources wisely.

Collaboration: We use teamwork to achieve common goals and solve problems.

Accountability: We perform with integrity and respect.

Responsiveness: We achieve our mission by serving our customers and engaging our partners.

Excellence: We promote quality outcomes through learning and continuous performance improvement.



Ten Public Health Achievements

- | | |
|--|---|
| 1. Vaccine-Preventable Diseases | 6. Motor Vehicle Safety |
| 2. Prevention and Control of Infectious Diseases | 7. Tobacco Control |
| 3. Maternal and Infant Health | 8. Cancer Prevention |
| 4. Cardiovascular Disease Prevention | 9. Childhood Lead Poisoning Prevention |
| 5. Occupational Safety | 10. Public Health Preparedness and Response |

79 million
Americans with some form
of cardiovascular disease

FISCAL RESPONSIBILITY

Consolidated Statement of Operations FY 2012/2013

Revenues:

General Revenue	7,798,342.00
Other State Funds	1,048,143.00
Federal Funds	8,855,272.00
Local Revenues	18,410,636.00
Trust Fund Drawdown	6,050.00
Total Revenue	\$36,112,393.00

Expenditures:

Salaries	26,187,666.00
Other Personnel Services	724,142.00
Expense Categories	8,540,153.00
Other Capital Outlay	83,033.00
Transfers	564,154.00
Refunds of State Revenues	19,295.00
Total Expenditures	\$36,118,443.00

46 million
People in the U.S. who got
sick from foodborne diseases

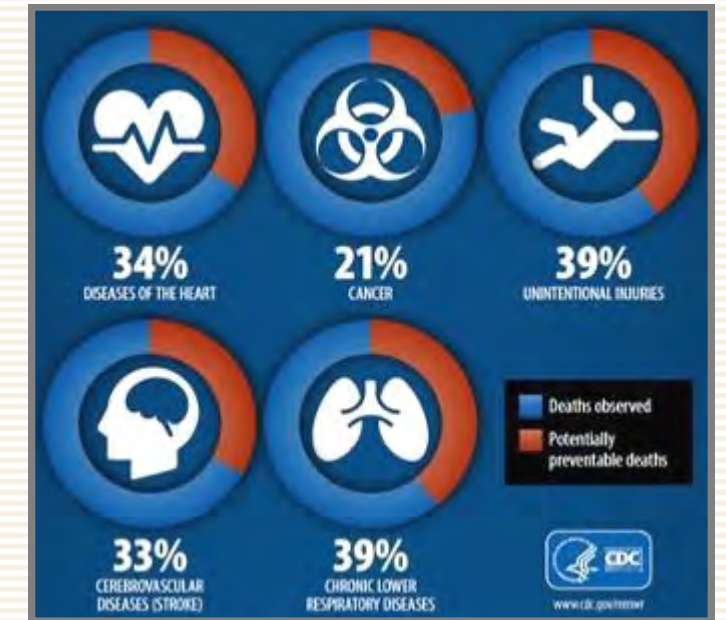
COMMUNITY IMPACT

Potentially Preventable Deaths, U.S.

Each year, in the U.S., nearly 900,000 people die prematurely from the five leading causes of death, and yet 20 to 40 percent of the deaths from each cause could be prevented, according to the Centers for Disease Control and Prevention, (CDC).

The five leading causes of death in the United States are heart disease, cancer, chronic lower respiratory diseases, stroke, and unintentional injuries. If all the states had the lowest death rate observed for each cause, it would be possible to prevent:

- 34% of premature deaths from heart diseases, prolonging about 92,000 lives.
- 21% of premature cancer deaths, prolonging about 84,500 lives.
- 39% of premature deaths from chronic lower respiratory diseases, prolonging about 29,000 lives.
- 33% of premature stroke deaths, prolonging about 17,000 lives.
- 39% of premature deaths from unintentional injuries, prolonging about 37,000 lives.



There are modifiable risk factors largely responsible for each of the leading causes of death. These risk factors include:

- ◆ Heart disease risks include tobacco use, high blood pressure, high cholesterol, type 2 diabetes, poor diet, overweight, and lack of physical activity.
- ◆ Cancer risks include tobacco use, poor diet, lack of physical activity, overweight, sun exposure, certain hormones, alcohol, some viruses and bacteria, ionizing radiation, certain chemicals, and other substances.
- ◆ Chronic respiratory disease risks include tobacco smoke, second-hand smoke exposure, other indoor and outdoor air pollutants, allergens, and exposure to occupational agents.
- ◆ Stroke risks include high blood pressure, high cholesterol, heart disease, diabetes, overweight, previous stroke, tobacco use, alcohol use, and lack of physical activity.
- ◆ Unintentional injury risks include lack of seatbelt use, lack of motorcycle helmet use, unsafe consumer products, drug and alcohol use (including prescription drug misuse), exposure to occupational hazards, and unsafe home and community environments.

1.6 Million
Yearly crashes from drivers
using cell phones/texting (U.S.)

COMMUNITY IMPACT

Public Health Accreditation-*Mapping Our Future*

In 2013, the Department of Health (DOH)-Orange moved forward to complete the accreditation application integrated with DOH headquarters. Public health accreditation seeks to:

- ❖ Improve public health departments and public health infrastructure;
- ❖ Strengthen delivery of public health services and programs; and
- ❖ Increase accountability and credibility.

Internal efforts focused on the development of an Accreditation Team made up of Domain Champions and a Marketing and Education Team. The Domain Champions [representative of various DOH programs] guided by a Team Lead and Co-Lead prepared what seemed to be an insurmountable mountain of documentation to serve as evidence for each of the 12 domains of excellence in public health.

Domain 1. Assess: DOH-Orange assesses community health in a variety of ways. In addition to community wide collaborative efforts, the Epidemiology Department conducts surveillance and assessments to ensure the community's health. In June 2013, this department reported on the first influenza A (H3N2) variant (H3N2v) virus infection of the year in their Epidemiology Surveillance Report.

Domain 2. Investigate: The Epidemiology Department engages in investigations of outbreaks and have the capacity to respond to after-hour reportable health emergencies. On the 2013 County Performance Snapshot, DOH-Orange met acceptable levels for six out of six (100%) of the Epidemiology measures. The six measures are **accessibility, data quality, timeliness, education/training, surveillance and investigation, and percent of target cases interviewed.**

Domain 3. Inform and Educate: In 2013, the Environmental Health Program continued the *Asthma-Friendly Childcare Center Project* to help Orange County childcare centers become more asthma-friendly. The project provides the opportunity for childcare center staff, parents, and community partners to receive free on-line training. Participating centers can also be recognized for their effort in becoming an Asthma Friendly Childcare Center. In 2013, 16 trainings were provided with Environmental Assessments of each facility.

Domain 4. Community Engagement: Through community engagement, DOH-Orange addresses public health needs. One example is the Healthy Orange Collaborative. The Collaborative is made up of high level community leaders with the goal to use the findings from the community health assessments (CHA) and merge them into a working document to help address the health needs of the community.

Domain 5. Policies and Plans: DOH-Orange understands that it is critical to monitor and track policies under consideration by governing entities. Health department staff stay informed via updates on various bills that may affect the department and the community. Public health officials also have the role of informing governing entities, elected officials and/or the public of potential public health impacts, intended and unintended, from current and/or proposed policies.

FISCAL RESPONSIBILITY

2013 Budget by Services

Immunization	\$ 1,038,383.00	3%
Sexually Transmitted Disease	\$ 1,477,026.00	4%
AIDS	\$ 7,281,608.00	20%
Tuberculosis	\$ 1,756,544.00	5%
Community Disease Surveillance	\$ 797,071.00	0%
Hepatitis	\$ 67,513.09	0%
Preparedness and Response	\$ 675,911.00	2%
Vital Records	\$ 661,499.00	2%
Chronic Disease Prevention	\$ 417,801.00	1%
Tobacco Use Intervention	\$ 1,507,712.00	4%
WIC	\$ 6,204,151.00	17%
Family Planning	\$ 1,582,299.00	4%
Improved Pregnancy Outcomes	\$ 3,180,353.00	9%
Health Start Prenatal	\$ 2,465,075.00	7%
Comprehensive Child Health	\$ 29,626.00	0%
Healthy Start Child	\$ 835,726.00	2%
School Health	\$ 1,533,673.00	4%
Comprehensive Adult Health	\$ 650,695.00	2%
Community Health Development	\$ 207,867.00	1%
Dental Health	\$ 1,287,613.00	4%
Environmental Health	\$ 2,461,224.00	7%
TOTAL BUDGET	\$36,119,342.00	100.00%

AWARDS AND RECOGNITIONS

National Association of City/County Health Officers (NACCHO) Awards

- ◆ The Women Infants and Children (WIC) Program and the Information Technology Program won a Promising award for the development and implementation of a client flow system, **Q-Flow**, that helped speed up client flow, resulting in 10% less wait time for clients.

Davis Productivity Awards



In 1989, J.E. Davis and his brother A.D. Davis initiated their vision of inspiring, rewarding and recognizing enterprising state employees– the Davis Productivity Awards – much like they did throughout Winn-Dixie Stores, Inc. After twenty-four years, this nationally unique, pre-eminent awards program continues to seek out productive and dedicated workers in state government and honors them as shining examples of innovation and creativity far beyond the call of duty. These employees know their hard work and dedication is rewarded and recognized by the winners and customers of Florida government – *the taxpayers*.

- ◆ **All In to Clear Air Mobile Display.** This innovative and interactive, first-in-Florida, 3D display was created on a 30 X 8ft. truck bed. It was designed to bring to life the **all into clear air** campaign television spot. The spot educates on the dangers of exposure to second-hand smoke in outdoor places, specifically parks and recreation areas. The display featured several child mannequins wearing gas masks while on playground equipment. The display is set on front of a back drop of clear blue skies, where the “children” are being exposed to second-hand smoke which is emitted from a built-in smoke-machine. Contributing to the educational and awareness message regarding exposure to second-hand smoke, the mobile display uses a sound system to play the campaign’s 30 second radio spot.
- ◆ **Protocol for Collection of Permit Fees to Escalate Permitting.** The project provided a plan to have clients on their visit to the Environmental Health Program office fill out the required applications so that the clerical staff can enter the information into the EHD system and collect all fees.
- ◆ **Pee and Go (PNG)** The **Pee & Go** procedure was created as a mechanism to rapidly screen asymptomatic sexually transmitted disease (STD) clients. Pee & Go enables the asymptomatic Gonorrhea (GC) and Chlamydia (CT) client to receive services much faster. As a result, clinic visit duration has been reduced by 50%, from 1-2 hours to only 30 minutes-1 hour. By implementing the Pee & Go procedure along with nursing protocols, DOH-Orange County saved \$300,000.

COMMUNITY IMPACT

Public Health Accreditation...Continued

Domain 6. Public Health Laws: Environmental Health holds one of the main regulatory arms of the public health system. “Environmental Health is concerned with the prevention of injury and disease by protecting humans in their environment. Generally, environmental health programs seek to minimize or eliminate risk factors in the human environment that threaten life and health” (*Environmental Health Program Manual/DOHM 150-4 – September 2013*). For example, in the evaluation of the Onsite Sewage Program, the department received a score of 92% with a rating of “Excellent.”

Domain 7. Access to Care: DOH-Orange has been an active member of the Primary Care Access Network (PCAN) since its inception in 2000. PCAN represents providers and other community organizations dedicated to improving access to healthcare.

Domain 8. Workforce: Public health education in 2013 included educating students on public health and furthering the skills of our workforce. Through collaborative agreements with several local and state universities/colleges, DOH-Orange provides learning opportunities for students enrolled in the field of applied public health. DOH-Orange also supports and values employee development activities. The health department’s Workforce Development Group listed as their 2013 accomplishments:

- Development/implementation of Feedback Forum
- Created the SharePoint Workgroup
- Development/implementation of succession planning effort
- Outlined agency mentoring program

Domain 9. Quality Improvement: A Quality Management System (QMS) was designed to establish a shared understanding and focus of the State and County’s public health priorities. The QMS includes interacting and interdependent processes that are repeatable, use data and information for decision making, and support for organizational learning. The overall scope of the system is to provide improved service delivery by effective use of available resources.

Domain 10. Evidence-Based Practices: The local partnership focuses on the state-wide objectives leading to policy changes, youth education and prevention of initiation into tobacco use through the **SWAT** (Students Working Against Tobacco) initiatives. The Quitline is promoted to increase the number of residents who quit smoking.

Domain 11. Administration and Management: DOH-Orange is authorized by law to provide services statewide as an integrated public health agency. The 67 county health departments report through the Deputy Secretary for Statewide Services to the State Surgeon General. All personnel of county health departments are employees of the Florida Department of Health. As such, Department policies and procedures are applicable to all 67 county health departments that are required to develop additional policies and procedures for their site and to post them.

While Domain Champions gathered documentation, the Marketing/ Education Team developed a year-long internal messaging campaign to inform and educate staff about the accreditation process and benefits to the department and the community. The messaging campaign entitled “**Mapping Our Future**” was very successful in generating interest and support.

25%
Reduction of tooth decay as a result of fluoridated water (U.S.)

COMMUNITY IMPACT

Dental Program Participates in *Project Dentist Care*

On June 13 and 14, 2013, the Dental Program at the Department of Health in Orange County (DOH-Orange) was invited to participate with **Project Dentist Care**, an event at this year's Florida National Dental Convention.



The event showcased three of Florida's mobile dental units. One of the mobile units was provided by the DOH-Orange dental program.

The mobile units were housed inside the conference exhibit hall and were used to provide dental check-ups and treatment for 65 foster children from the Orlando area.

Twenty dentist from all over the state of Florida donated their time to treat the children and to provide pro bono dental care valued at \$28,109.

A Growing Concern

Some of our community Voluntary Preschool (VPK) students, assisted by their teachers and the **Green SPROUTS Project**, have, for the past four years, been learning to get healthy by growing a garden, making a salad, and eating their veggies. The 2013 focus locations are the VPK's located within the Parramore, Lake Dot, and Holden Heights communities.

The DOH-Orange, Environmental Health Program, partnered with the VPK centers to assist with the goal of reducing childhood obesity

through the utilization of a teachable stewardship program entitled *Sustainable Practices to Reduce Obesity Using Teachable Stewardship*. (**SPROUTS**).

Staff from the Women's Infants and Children (WIC) Food and Nutrition Program visited the childcare centers and taught the children "garden to plate" ideas.

In just 6 months in 2013, over 350 children participated in the **SPROUTS** Project.



1300
Lives saved by use of seat belts (U.S.)

2013 GRANT AWARDS

Grant— Ryan White Part A—Medical Case Management **Award**—\$391,128 [Year 1 of 3]
Project—Provides medical case management services to HIV/AIDS clients

Grant— Ryan White Part A— Non-Medical Case Management **Award**—\$71,100 [Year 1 of 3]
Project— Provides medical case management services to HIV/AIDS clients

Grant— Florida DOH Injury Prevention Program **Award**—\$5,000
Project— Senior Falls Prevention mini-grant to help communities in Orange County enhance the capacity to prevent falls among the elderly and deliver integrated falls prevention services.

Grant— Car Seat Safety **Award**— \$11,000
Project— Provides car seats and car seat safety education to eligible participants

2013 Continued Multi-Year Projects:

Grant— State Tobacco Partnership Competitive Proposal (Students Working Against Tobacco-SWAT) **Award**— \$71,500 [Year 2 of 3] supplemental administrative costs
Project— Supports comprehensive tobacco use prevention and cessation efforts targeting youth

Grant— State Tobacco Partnership Competitive Proposal (Students Working Against Tobacco-SWAT) **Award**— \$224,230 [Year 2 of 3]
Project— Supports comprehensive tobacco use prevention and cessation efforts targeting youth

Grant— Ryan White Part A— Outpatient Ambulatory Medical Care (OAMC) **Award**— \$1,077,000 [Year 2 of 3]
Project— Provides HIV patient care, access to specialty care providers and lab services for HIV infected adults

Grant— Ryan White Part B— Non-Medical Case Management **Award**— \$35,500 [Year 3 of 3]
Project— Project provides HIV/AIDS non-medical case management to HIV infected adults in Orange County.

Grant— Ryan White Part D— OCHD/HUG-Me competitive proposal [includes expansion award] **Award**— \$868,0739 [Year 2 of 3] – Federal Reapplication Required
Project— Supports comprehensive HIV/AIDS treatment services for women, infants, children and families

Grant— Ryan White Part B— Medical Nutrition Therapy **Award**— \$59,296 [Year 3 of 3]
Project— Provides HIV/AIDS medical nutrition therapy to HIV infected adults in Orange County.

Grant— Ryan White Part A—OAMC-Minority AIDS Initiative **Award**— \$580,705 [Year 2 of 3]
Project— Provides patient care and access to specialty providers for HIV infected minority adults

Grant— Ryan White Part C—OCHD/HUG-Me competitive proposal [includes expansion award] **Award**— \$1,111,183 [Year 4 of 5]
Project— Supports comprehensive HIV/AIDS early intervention services (EIS)

Grant— Blue Cross Blue Shield Foundation funding through The Health Council of East Central Florida **Award**— \$15,000 [Over 2 Year period December 2012 – December 2014]
Project— *GreenSPROUTS*: Sustainable Practices To Reduce Obesity Using Teachable Stewardship - addressing childhood obesity by offering hands-on gardening experiences, promoting healthy eating, and encouraging physical activity for children in early learning/preschool settings.

\$298 billion
Cost of tobacco use
in the U.S.

COMMUNITY IMPACT

Fit-Friendly Worksite Award – Gold Level

The Florida Department of Health in Orange County (DOH-Orange) was recognized as a **Fit-Friendly Worksite**. The award is given by the American Heart Association's **My Heart. My Life**. It is intended to be a catalyst for positive change in the workplace across America and right here in Orange County. It recognizes worksites for making the health and wellness of their employees a priority.



DOH-Orange was recognized at the Gold Level, which means that:

- All employees are offered physical activity support at the worksite.
- Healthy eating options are available at the worksite.
- A wellness culture is promoted at the worksite.
- Nine criteria in the areas of physical activity, nutrition and culture, as outlined by the American Heart Association were met.

The DOH-Orange, Office of Community Health “led the way” to create a healthy community and work environment through integrated programs and services. The services are designed to: educate staff on healthy personal practices, prevent work-related injury and illness, and foster a healthy campus environment.

For more information on worksite wellness, Contact the Office of Community Health’s Health and Safety Promotions Manager at 407-858-1456.



WALK AROUND THE WORLD



90%
Americans aged 2 years and
older who eat too much sodium

COMMUNITY IMPACT

Linkage-to-Care

The Area 7 Program Office provides linkage-to-care of people living with HIV disease. **Linkage-to-Care** helps to improve health outcomes by getting newly diagnosed, or lost-to-care HIV positive individuals to medical care within sixty (60) days of their diagnosis and/or their desire to return to care.



By beginning medication for the first time and/or starting back on medication reduces the patient’s viral load, improves their quality of life, and prevents further replication of the virus, which reduces the incidence of disease progression into AIDS. During 2013, 80 patients were linked to HIV care.

In 2013, the Area 7 Program Office sponsored, participated, and or facilitated over 20 HIV testing events in local communities in recognition of HIV awareness. As a result of these events, over 1,000 individuals throughout Orange, Seminole, Osceola and, Brevard now know their HIV status, which is the first step in preventing and treating this disease.

Area 7 Program Participates in *Female Empowerment Symposium*

Valencia College held a *Female Empowerment Symposium* to provide young women with the tools to confidently navigate pressures, expectations, and personal struggles they encounter on a daily basis. The goal was to inspire, motivate, and empower them to tap into their inner potential and transform their own lives. As part of the symposium, students were offered HIV +testing and education.



Part I of the symposium was a panel that consisted of 5 females from different walks of life who shared their experiences and insight. The panel was moderated by the Florida Department of Health, the DOH-Orange Area 7 Program Office, as well as some of their medical providers who conducted HIV testing. As a result, 75 students chose to be tested. In addition to HIV testing, the student body was given condoms, support materials and educational brochures,

Over 100 students received HIV testing at **Part II** of the symposium which was an all-male panel with the theme *Real Men, Real Talk*.

100,000
Americans hospitalized yearly
from food poisoning

COMMUNITY IMPACT

Informing the Public

The Public Information Officers (PIOs) provide timely and accurate communication to the media and the public for the Department of Health in Orange and Seminole Counties (DOH-Orange, DOH-Seminole) for risk and crisis management. Every year brings different challenges and important health issues to communicate to the public. This year, some of the more significant press releases included measles cases and unfortunately an infant death due to Whooping Cough. The communication stated the facts, along with a call to action for family members to remain up-to-date on immunizations to prevent more cases and fatalities in our community from vaccine preventable diseases.

PIOs respond each year to additional media request and questions related to the releases as well as provide and coordinate interviews for the media with subject matter experts. They also provide yearly media skills training for DOH-Orange "subject matter experts."

Other press releases were issued to local media on a variety of important health topics such as: amoeba precautions in fresh water, recreational water illness prevention, importance of flu vaccine, back to school immunizations, drowning prevention, teen pregnancy prevention, and HIV prevention—along with notices to promote community events.

The Public Information Officers work to promote health department services and events. The PIOs provide consultation on media relations, help in the writing of an event's press release, sends the release to media outlets, and facilitate interviews.

A standing partner for DOH-Orange is the Orange TV (OTV), the Orange County Government Television channel. Since 2007, PIO Mirna Chamorro has been the host for the OTV Spanish Health Show "SALUD". She has been the coordinator for "subject matter experts" and community leaders to be guests on the show. During the past couple of years, she has also been a co-producer of SALUD.



7000
Number of chemicals in
second-hand smoke

COMMUNITY IMPACT

Epidemiology-Reportable Disease List...Continued

Disease	ORANGE			FLORIDA		
	2013	2012	2011	2013	2012	2011
Listeriosis	3	2	0	42	33	38
Lyme Disease	5	3	4	170	132	130
Malaria	8	7	8	61	64	107
Measles	6	0	1	9	0	9
Melioidosis	0	1	0	0	1	0
Meningitis (Bacterial, Cryptococcal, Mycotic)	8	11	13	152	196	192
Meningococcal Disease	2	0	1	66	50	57
Mumps	1	0	3	9	9	28
Pertussis	58	41	11	742	575	313
Pesticide-Related Illness Or Injury	5	12	2	68	71	176
Rabies, Possible Exposure	96	89	87	2771	2403	2419
Ricin Toxin Poisoning	0	0	0	1	0	0
Rocky Mountain Spotted Fever	2	1	0	24	32	13
S. aureus, Community-Associated Mortality	0	0	0	16	9	13
S. pneumoniae Invasive Disease, Drug-Resistant	37	24	37	560	467	646
S. pneumoniae Invasive Disease, Drug-Susceptible	27	24	22	576	547	687
Salmonellosis	334	333	295	6400	6757	5966
Shiga Toxin-Producing E. coli (STEC) Infection	20	20	18	525	425	404
Shigellosis	45	107	265	1128	1790	2653
Streptococcus Invasive Disease (Group A)	19	11	15	309	253	250
Varicella	35	30	30	665	817	870
Vibriosis (Vibrio alginolyticus)	2	2	3	50	58	49
Vibriosis (Vibrio cholerae, Type Non-O1)	1	0	1	13	8	25
Vibriosis (Vibrio parahaemolyticus)	1	0	0	57	44	30
Vibriosis (Vibrio vulnificus)	1	0	0	46	27	36
Total	3165	2889	3335	57071	52431	51321

41%
Number of teens who eat
fast food every day

COMMUNITY IMPACT

Epidemiology-Reportable Disease List

Disease	ORANGE			FLORIDA		
	2013	2012	2011	2013	2012	2011
Amebic Encephalitis	0	0	0	1	0	1
Brucellosis	3	0	0	10	17	6
Campylobacteriosis	107	177	137	2672	2655	2394
Carbon Monoxide Poisoning	18	7	3	178	93	106
Cholera (Vibrio cholera, Type O1)	0	1	0	5	7	11
Ciguatera Fish Poisoning	0	0	1	52	25	53
Creutzfeldt-Jakob Disease (CJD)	1	0	1	20	25	17
Cryptosporidiosis	26	16	11	428	473	437
Cyclosporiasis	1	0	1	49	25	58
Dengue Fever	20	19	7	180	138	79
Eastern Equine Encephalitis Virus Neuroinvasive Disease	0	0	0	2	2	0
Eastern Equine Encephalitis Virus Non-Neuroinvasive Disease	0	0	0	0	0	0
Giardiasis	70	64	69	1122	1117	1251
H. influenzae Invasive Disease	22	12	7	282	238	235
Hemolytic Uremic Syndrome	0	0	1	15	1	4
Hepatitis A	4	7	2	135	126	112
Hepatitis B, Acute	10	11	17	386	297	237
Hepatitis B, Chronic	387	343	400	4305	4161	4367
Hepatitis B, HBsAg in Pregnant Women	61	63	67	475	410	471
Hepatitis B, Perinatal	1	0	0	2	1	0
Hepatitis C, Acute	6	15	15	225	170	100
Hepatitis C, Chronic	1664	1381	1733	31006	26466	25288
Influenza-Associated Pediatric Mortality	0	0	0	8	4	1
Lead Poisoning	24	37	24	767	978	779
Legionellosis	24	18	21	285	233	199
Leptospirosis	0	0	2	1	1	4

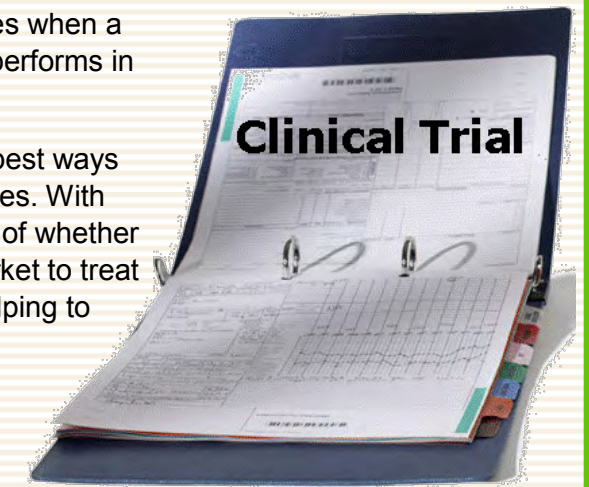
1,200,493
2013 Orange County
population

COMMUNITY IMPACT

Importance of Clinical Trials

After years spent in developing a product, the real test comes when a pharmaceutical company must determine how the product performs in people.

Clinical trials, or research studies in people, are one of the best ways to test these newly developed drugs, devices, and procedures. With clinical trials, scientists and physicians can also get an idea of whether their product is better than anything else already on the market to treat certain illness. Those who participate in clinical trials are helping to provide the best possible health care.



Project SAFE

Project SAFE is a collaboration between the Department of Health in Orange County and Sociometrics Corporation, a California based research organization specializing in Behavioral Trials. The primary objective of this behavioral study is to evaluate the effectiveness of a computerized-based training on sexual education among the Hispanic community.



Phase 1 of the study was designed to recruit 165 females between the ages of 18 to 34 years of age. The study gathers sexual and behavioral relationship information through the use of an attitudinal questionnaire. The questions are designed to assess a participant's knowledge and attitude regarding HIV and sexually transmitted infections (STI's). The participants are then either assigned to

the computerized training, known as the *treatment arm*, or they are asked to review HIV educational materials, the *control arm*.

Phase 2 of the study requires the participants to return 6 months after their initial session to complete a follow-up questionnaire. This questionnaire is designed to measure behavioral and lifestyle change as a result of the information and education received months prior.

The **Project SAFE** study has contributed in the Hispanic community to an increase in awareness of the issues related to sexual behaviors, served as a form of empowerment for the participants to take control, and to seek testing and to demand healthier sexual relationships.

20 million
New cases of U.S. sexually
transmitted infections each year

COMMUNITY IMPACT

Academic Health Department/Clinical Trials

The development of the DOH-Orange into an Academic Health Department (a “learning community”) has as its primary goal to use a team-based approach and a community-centered vision to develop partnerships with academic centers, community agencies and private and public entities to expand four key areas which are integral to the development of the model: (1) core service delivery, (2) teaching/education, (3) research and (4) informatics. The expected outcome of this effort is to improve public health service delivery within the context of the Ten Essential Public Health Services and the CDC identified Winnable Battles. The DOH-Orange Academic Health Department effort permeates across many (if not all) of the departments.

Core Services:

Refers to all public health services offered by the department including women’s health, family planning, epidemiology, environmental health services, immunizations, infectious diseases, etc. The hope is to build a process that will allow us as an agency to learn about the community’s needs from the services we provide and the population we serve.

Teaching/Education:

Since its inception, the health department has served to provide hands-on public health education to students from diverse backgrounds including nursing, epidemiology, public health, social sciences, health management, etc. with a place to experience public health at its core.

Some projects that have been implemented via student projects:

- Sexual Transmitted Infections (STI) Repeat Rate and Zip Code Mapping
- Refugees and Geosentinel Data Collection
- Improving Patient Care



33%
Number of children who eat
fast food every day

COMMUNITY IMPACT

Healthiest Weight Initiative



JOHN H. ARMSTRONG, MD, FACS,
State of Florida Surgeon General
and Secretary of Health

As we survey the health landscape, we see that the #1 public health threat that challenges the bright future of Florida is weight. Currently, only 36 percent of Floridians are at healthy weight. On our current trend, by 2030, almost 60 percent will be obese. Additionally, six out of ten children born today will be obese by the time they graduate from high school.

Over the next 20 years in Florida, obesity is expected to contribute to millions of cases of preventable chronic diseases such as type 2 diabetes, heart disease and cancer, costing an estimated \$34 billion. To address this important public health issue, the Florida Department of Health launched the **Healthiest Weight Florida** initiative in January 2013.

Healthiest Weight Florida, a public-private collaboration brings together state agencies, not-for-profit organizations, businesses, as well as entire communities to help Florida’s children and adults make consistent, informed choices about healthy eating and active living.

Strategies to Address Healthy Weight in Florida

There are a variety of factors that play a role in unhealthy weight. This makes it a complex health issue to address. Behavior, environmental and genetic factors all influence weight. At this time, behavior and environmental factors are the most promising areas for prevention and treatment actions. **Healthiest Weight Florida** employs five strategies to address behavior and environmental change.

Strategy One — Increase opportunities for physical activity

Strategy Two — Make healthy food available everywhere

Strategy Three — Promote health in the worksite

Strategy Four — Strengthen schools as the heart of health

Strategy Five — Market what matters for a healthy life

6000
Fatal crashes yearly caused
by drowsy drivers

COMMUNITY IMPACT

Promoting Physical Activity

The DOH-Orange, Office of Community Health sponsors an annual community-wide 5K Walk and health fair to encourage participants to be more active. The March 9, 2013 event, held at Hankins Park in Orlando, was the Seventh Annual *Washington Shores 5K Walk & Health Fair*. A challenge was issued for teams from churches, schools, civic organizations, and businesses. Attendees were able to enjoy many activities that included: health screenings, health information, healthy snacks, cooking demonstrations, and other fun activities such as a hula hoop contest, Zumba, massages, and much more. In addition to the 3.1 mile route, there was a one mile route especially for senior adults and young children.

This event, a collaboration between the DOH-Orange, City of Orlando and Orlando Alumnae Chapter of Delta Sigma Theta Sorority, Inc. encouraged residents to live a healthier lifestyle by becoming more physically active.

Adults and children with healthy lifestyles are less likely to develop heart disease, cancer, stroke, diabetes, and chronic obstructive pulmonary disease (COPD). Together, these conditions accounted for over half (53.4 percent) the deaths in 2010, according to Florida statistics. The CDC reports that in 2011, Florida's obesity prevalence in adults was 26 percent. In order to help control the risk factors for obesity, stroke and other chronic diseases, it is important to live a healthy lifestyle which includes: not smoking, eating a healthy diet, exercising regularly, reducing stress, and visiting a doctor to monitor ones health.



20 Seconds
Minimum time needed
to thoroughly wash hands

COMMUNITY IMPACT

Academic Health Department/Clinical Trialscontinued

Research/Clinical Trials:

Title/Description	Primary Investigator (PI) /Co-PI	Location	Participants	Recruitment Status
SAFE: targets Hispanic women for web-based risk behavior education	W. Carter Y. Martinez	DOH-Orange	178	Closed
START (<u>S</u> trategic <u>T</u> iming of <u>A</u> nti <u>R</u> etroviral <u>T</u> reatment)	N. Desai E. Szcypinska L. Hopkins	Immunology	14	Closed
Egrifta Diabetes-Diabetes retinopathy study	N. Desai E. Szcypinska L. Hopkins	Immunology	5	On-hold
Egrifta Observation-Long Term Observation: Abdominal lipohypertrophy study	N. Desai E. Szcypinska L. Hopkins	Immunology	17	Open
VDOT (<u>V</u> ideo <u>D</u> irect <u>O</u> bservation <u>T</u> herapy)	V. Nguyen W. Alvira	TB	12	Open
Feed My Baby-behavioral breastfeeding study among minority women	J. Tompkins	WIC	200+	Closed
Medical Monitoring Program (MMP) Study -review of Medicaid HIV care providers	D. Tucci	Area 7	N/A	Open
Pregnancy and Smoking Study: relationship between smoking and pregnancy	P. Smith	MomCare	245	Open

Informatics:

In order to more effectively serve TB clients, DOH-Orange staff are looking into the possibility of utilizing smartphone devices for virtual direct observational therapy (VDOT). Since these devices offer camera and video recording capability, the TB staff will be able to observe the patient taking their medications.

Additional benefits of using smartphones include: (1) the ability to video conference with the patient in order to monitor adverse reactions to prescribed medications and; (2) improve the ability to more quickly respond to a patients health care and treatment questions. TB Patients would also have more freedom, convenience, and privacy for direct observation of prescribed medication that would need to be taken daily.

12th.
Florida's ranking for least obese state in the U.S.

COMMUNITY IMPACT

Environmental Health Regulatory Activities

Community Environmental Health

Food Permits	838
Group Care	1249
Mobile Home Parks	127
Pools	2210
Biomedical Waste	2159
Biomedical Waste Exempt	775
Body Piercing	32
Tanning	60
Water	269
Well	828
Tattoo	304
Migrant	2
Animal Bites	740
Nuisances	758
Early Learning Coalition of Orange County	143



Onsite Treatment Disposable Systems

New	392
Repair	1301
Exiting	15
Abandoned	190
Aerobic Treatment Unit	278
Pump Trucks	65
Industrial Manufacturing Permits	1219

1 in 6
Americans will get sick this year from food poisoning

COMMUNITY IMPACT

Tobacco Free Florida Update...continued

One of those businesses, University Behavioral Center, decided to implement a tobacco-free campus policy. The Tobacco Free Florida in Orange County staff assisted with the policy implementation process by providing sample policy language and cessation resources.



Working with employers to offer cessation services to their employees will remain an area of focus for Tobacco Free Florida in Orange County.

Smokers Use More Resources Than Nonsmokers:

- ◆ Higher average insured payments (\$1145 vs. \$762)
- ◆ Higher average outpatient payments (\$122 vs. \$75)
- ◆ Increased hospital admissions/1,000 employees (124 vs. 76)
- ◆ Increased hospital days/1,000 employees (800 vs. 381)

Smoking Impacts Employee Productivity:

- ◆ Smokers are absent 1.5 times more often than nonsmokers
- ◆ Smokers average 6.7 health-related absences per year compared with nonsmokers (4.4 days)
- ◆ Smokers average 76.5 hours lost per year compared with nonsmokers (42.8 hours)
- ◆ Work time spent on smoking-related activities results in 4 weeks/year of non-productive time

Additional Annual Employer Costs Due to Lost Productivity and Medical Expenses: \$3,400

SOURCE: Tobacco Free Florida

3 out of 4
Car seats not used
correctly (U.S.)

COMMUNITY IMPACT

Tobacco Free Florida Update

The Tobacco Free Florida Program in Orange County made great strides in two crucial areas of tobacco prevention during 2013.



Program staff worked closely with A Green Property Management (AGPM) to help establish smoke-free policies for their apartment communities.

During 2013, two test properties began the implementation process, and AGPM hopes to have all apartment communities in their portfolio implement smoke-free policies by the end of 2016.

The Tobacco Free Florida Program staff in Orange County provided technical assistance to AGPM by answering questions about the implementation process, providing sample lease addendums to management, and providing cessation resources to

residents and staff who expressed an interest in quitting tobacco use. The Tobacco Free Florida Program staff will continue to work with AGPM as they work towards the implementation of these policies.

Lately, employers have realized that the health of their employees directly impacts the success and bottom line of their businesses. In fact, smoking costs Florida **\$8.64 billion** in direct healthcare expenditures.

In response, staff of the Orange County Tobacco Free Florida Program worked closely with 15 businesses in the county to promote tobacco cessation services to their employees during 2013.



23 million
Number of Americans
with diabetes

COMMUNITY IMPACT

Asthma-Friendly Childcare Center Project

Asthma, the most common chronic disease in children under 18, affects more than 5 million children in the United States. It is one of the most common long-term diseases of children. Asthma causes repeated episodes of wheezing, breathlessness, chest tightness, and night-time or early morning coughing. It is the leading cause of school absenteeism and parents missing work.

The Florida Department of Health in Orange County Environmental Health Program, in collaboration with the Florida Department of Health's Asthma Program, and the Orange County Environmental Protection Division is helping Orange County childcare centers become asthma-friendly. The purpose of the **Asthma-Friendly Childcare Center Project**, is to increase awareness about asthma among childcare center staff, parents of children with asthma, and community partners. The emphasis is on targeting Florida's most disproportionately impacted populations.

This project provides an opportunity for all participating childcare center staff to receive free training. In addition, participating centers have an opportunity to be recognized by the Florida Asthma Coalition as an asthma-friendly childcare center. A list of recognized asthma friendly centers is posted on the Florida Department of Health website, www.floridahealth.gov, as well as on the Florida Asthma Coalition website, www.floridaasthmacoalition.com.

Childcare centers participating in the asthma project are able to provide a comprehensive asthma management program. The goals of the Asthma-Friendly Childcare Project include: helping staff provide support to children and their families who are dealing with asthma, providing assistance to ensure children with asthma have an asthma action plan on file, providing asthma education for parents, and identifying, managing, and controlling asthma triggers in the childcare setting.

In 2013, sixteen trainings were provided along with Environmental Assessments of the facilities.



COMMUNITY IMPACT

Creating Partnerships—Infant Mortality

Orange County is challenged with high infant mortality rates, however, 2012 saw a decrease in the rate in every population except among Black babies. At 11.5 infant deaths per 1,000 births, the infant mortality rate among Black babies was more than double that of the White and Hispanic rates. An article submitted to the Orlando Sentinel newspaper implored community partners to aggressively address this disparity. The Department of Health-Orange County (DOH-Orange) Director, Kevin M. Sherin, MD, called the rates “unacceptable” and lead DOH-Orange in the effort to strengthen and create new community partnerships to lower infant mortality rates among Black babies.



Underscoring this public health issue was the DOH-Orange Community Health Improvement Plan (CHIP) in which reducing the rate of preterm births is a primary goal. Preterm birth (delivery before 39 weeks gestation) leads to complications that can ultimately cause an infant’s death. One in five Black babies is born preterm in Orange County. There are multiple reasons why a mother may deliver early, but increasing evidence connects social determinants of health to preterm births.

In 2013, DOH-Orange and the Healthy Start Coalition of Orange County formed a multi-sector team that applied for acceptance into the prestigious CityMatCH Institute for Equity in Birth Outcomes (EI). The EI is providing technical assistance in the development of two interventions that will address the root causes of infant mortality.

Creating this multi-sector team required partnering with non-traditional stakeholders to explore the impact of poverty, domestic violence, racial injustice, and other social determinants on preterm births. One such partnership is with the University of Central Florida’s Marriage and Family Research Institute (MFRI). While the MFRI had never been involved in infant mortality prevention efforts in the past, this partnership provides a connection between the MFRI’s work of helping couples develop effective communication skills, managing stress, avoiding domestic violence, and preventing infant deaths. The MFRI is consulting with the multi-sector team to develop an intervention aimed at reducing maternal stress while increasing fatherly support. Another new partnership is with Bithlo-based United Global Outreach, Inc. (UGO). This community-based organization is one of the community leaders transforming impoverished neighborhoods into healthy, thriving neighborhoods. UGO is consulting with the multi-sector team on how to work effectively with disenfranchised populations.



To learn more about how DOH-Orange County is addressing the high rates of Infant Mortality in our community, contact the Health Equity Coordinator at 407-858-1400 ext. 1217.



COMMUNITY IMPACT

Giving Babies A Healthy Start

In an effort to reduce infant mortality, the number of low birth weight babies, and improve the health and developmental outcomes of all infants, the Healthy Start/MomCare Program with funding provide by the Healthy Start Coalition of Orange County began “*Shower Power*”,



These baby showers are fun, educational workshops with information on a variety of health topics such as the importance of a women’s health during and after pregnancy, infant safety, Sudden Infant Death Syndrome (SIDS) reductions, and preterm labor.

Participants enjoy baby shower games, prizes, and refreshments. Along with public workshops given at various locations in the community, Healthy Start/MomCare staff visit private homes to give one-on-one instruction and education on the health and safety of infants, to not only the pregnant woman, but her immediate family/friends who might be potential caregivers for the infant.

As a result of this innovative approach, Charity Jones, Healthy Start Health Educator, received the 2013 Florida Department of Health, **Injury Prevention Award** which is given in conjunction with the Florida Injury Prevention Advisory Council to one individual in the state who demonstrates a commitment to injury prevention.

Woman, Infant and Children Program (WIC)

WIC, a federally funded program, provides nutrition education, healthy supplemental foods and health care referrals to income eligible pregnant, breastfeeding and non-breastfeeding postpartum women, and to infants and children up to age five who are at nutritional risk. In 2013, WIC increased nutrition contacts from **177,470** (in 2012) to **185,089 in 2013**. WIC staff provide personalized nutrition education/counseling to improve the dietary intake of individuals/families. Improved nutrition status reduces the risk for chronic disease. The total cost in the purchasing of WIC eligible foods by Orange County participants was approximately \$27.7 million dollars. WIC currently serves more than 33,000 clients in eight locations throughout Orange County.

The WIC weekly **Breastfeeding Support Groups** aim to increase the duration of breastfeeding to improve the long term health status of the mother and infant. The group is open to all breastfeeding women regardless of their WIC participation. In 2013, 417 mothers and their infants participated in the groups. The benefits of breastfeeding include: building a special bond with baby, providing a perfect source of nutrition, and cost savings. Breast milk protects a baby from illnesses including ear and upper respiratory infections, Sudden Infant Death Syndrome (SIDS), and obesity.



22 million
Number of U.S. school days
lost due to colds

COMMUNITY IMPACT

Tracking Tuberculosis Contact Investigations

Starting in January of 2013, the TB Program began to utilize the Patient Reporting Investigating Surveillance Manager (**PRISM**). This system was originally created for the State of Florida as a tool for tracking sexually transmitted diseases. The system provides an electronic method for staff to record field notes, track the progress and status of investigations, and monitor the evaluation process of each TB contact.



PRISM allows medical providers and clinical staff to input their disease reports and patient information directly into the state data system, resulting in a reduction of paperwork and reporting time. **PRISM** also provides a secure and confidential way to report required surveillance data.

The DOH-Orange County Tuberculosis Program is the only TB Program in the State of Florida using **PRISM** as a standard tracking system. To date, over 400 TB contacts have been followed in **PRISM**.

Protecting the Children

The DOH-Orange Immunization Program worked diligently to provide protection against vaccine preventable diseases to children 1 year of age in Orange County. Over 700 children received vaccines. In the 2 year old age group, over 562 children were reached.

A certificate of recognition was issued to the Immunization Program in 2013 for exceeding the 2 year old coverage level assessment at 94 percent. The State and National goal was 90 percent coverage.

During the calendar year 2013, the Immunization Program was recognized for achieving accurate vaccine accountability goals. These goals target Vaccine for Children (VCF) vaccines and; 1) Limits the amount of Wasted/ Spoiled/Expired (WSE) vaccine to 3 percent and/or \$5,000, whichever is smaller and; 2) Limits unaccounted for (UF) vaccine to less than 1 percent.



1 in 5
Number of child deaths
due to injuries (U.S.)

COMMUNITY IMPACT

Utilizing the Latest Mobile Technology

Over the past few years, the Department of Health-Orange County has seen a reduction in TB staff, who are required to monitor TB patients and the medications they take. Depending on the location of a patient's residence, some of these visits can require up to a 45 minute drive, each way, to ensure the clients are taking their medication daily.



Unfortunately, with increasing TB case loads and the closure of the AG Holly Hospital, there is a serious shortage of resources and staff necessary to accomplish this task. One solution to this public health problem is the use of smartphones which, over the past several years, have become very affordable.

These devices provide more flexibility and convenience for those who use them. Apple and Android based smartphone devices have computing capability and function capacity similar to a desktop computer. Most of these new smartphones offer a high definition camera with the ability to record video or take pictures. In addition, there are also many different mobile applications that can be downloaded to these devices for different needs.

With the enhanced capability of these smartphones, research will be done to determine which devices to use and which downloadable applications could serve as a tool, for the Virtual Direct Observed Therapy program (VDOT) to observe medications being taken by TB patients.

By implementing VDOT, TB staff will have a valuable tool that allows for video conferencing in order to observe and verify that TB patients are taking their TB medications. In addition to monitoring medications being taken by TB patients, smartphone technology can also provide a better communication means for the patients' health. This could include monitoring adverse reactions to prescribed medications and improving the ability to more quickly respond to a patient's health care and treatment questions. Patients would also have more freedom, convenience and privacy for direct observation of prescribed medication that would need to be taken daily. Pilot counties that would be the first to test this concept include: DOH in Orange, Duval, and Sarasota Counties.

Overall, smartphone technologies will provide a greater efficiency and higher customer satisfaction for the client and the treatment that they receive. San Diego Health Department has reported that VDOT has produced over a 95% satisfaction rate with clients that use smartphones for observation. This approach is expected to save travel time, and result in higher patient satisfaction, while allowing for more TB patients to be observed utilizing less DOH-Orange TB staff.

30+
Recommended SPF
of sunscreen

COMMUNITY IMPACT

CDC Focus On “Winnable Battles”

To keep pace with ever emerging public health challenges and to address the leading causes of death and disability, the Centers for Disease Control and Prevention (CDC) is focusing on what they are calling “Winnable Battles.”

“Winnable Battles” describe some public health priorities where CDC and public health can make significant progress in a relatively short time, generally, within one to four years. The following are those “Winnable Battles” with a focus on prevention.

- ◆ Healthcare-Associated infections
- ◆ HIV
- ◆ Motor Vehicle Safety
- ◆ Nutrition, Physical Activity, Obesity, and Food Safety
- ◆ Teen Pregnancy
- ◆ Tobacco

These public health areas were selected because of the following: 1) they address public health priorities which have a large-scale impact on health, 2) they’re evidence-based interventions that currently exist to address the issue/areas and they can be broadly implemented, and (3) intensive focus and efforts can have a significant impact in a relatively short period of time.

Examples of local and national “Winnable Battles”, accomplishments include:

- ◆ More than 2,700 salad bars have been delivered to schools, serving 1.3 million children
- ◆ The teen pregnancy rate in Orange County, Florida dropped from 14 percent in 2011, to 11 percent in 2013

For more information, please visit
www.cdc.gov/winnablebattles



44%
American households with
an emergency plan

COMMUNITY IMPACT

2013, Orange County STD Snapshot

CHLAMYDIA	GONORRHEA	SYPHILIS
◆ Reported cases increased 7.2 percent from 6,394 cases in 2012 to 6,856 cases in 2013	◆ Reported cases were 1,667 in 2012 and 1,916 cases in 2013	◆ Reported cases increased 20 percent from 236 cases in 2012 to 284 cases in 2013
◆ The ratio of female to male infections was 2.6 to 1	◆ The ratio of male to female infections was .75 to 1	◆ The ratio of male to female infections was 16.8 to 1
◆ 779 re-infections within 12 months	◆ 5.6 percent (107 cases) were HIV+ in 2013	◆ 98 percent (39) of all reported syphilis and HIV+ cases (40) were among men who have sex with men (MSM)
◆ 1.5 percent (103 cases) were HIV+ in 2013		

Volunteer Program

A total of 81 volunteers worked within the DOH–Orange in 2013. They included regular volunteers performing as staff along with interns, nursing/ medical students, and medical residents.

Volunteers are able to gain valuable skills in teaching and training along with an exceptional public health experience.

Through their internship, volunteers extend our areas of influence as well as contribute to a greater awareness of the numerous services public health provides in the community.



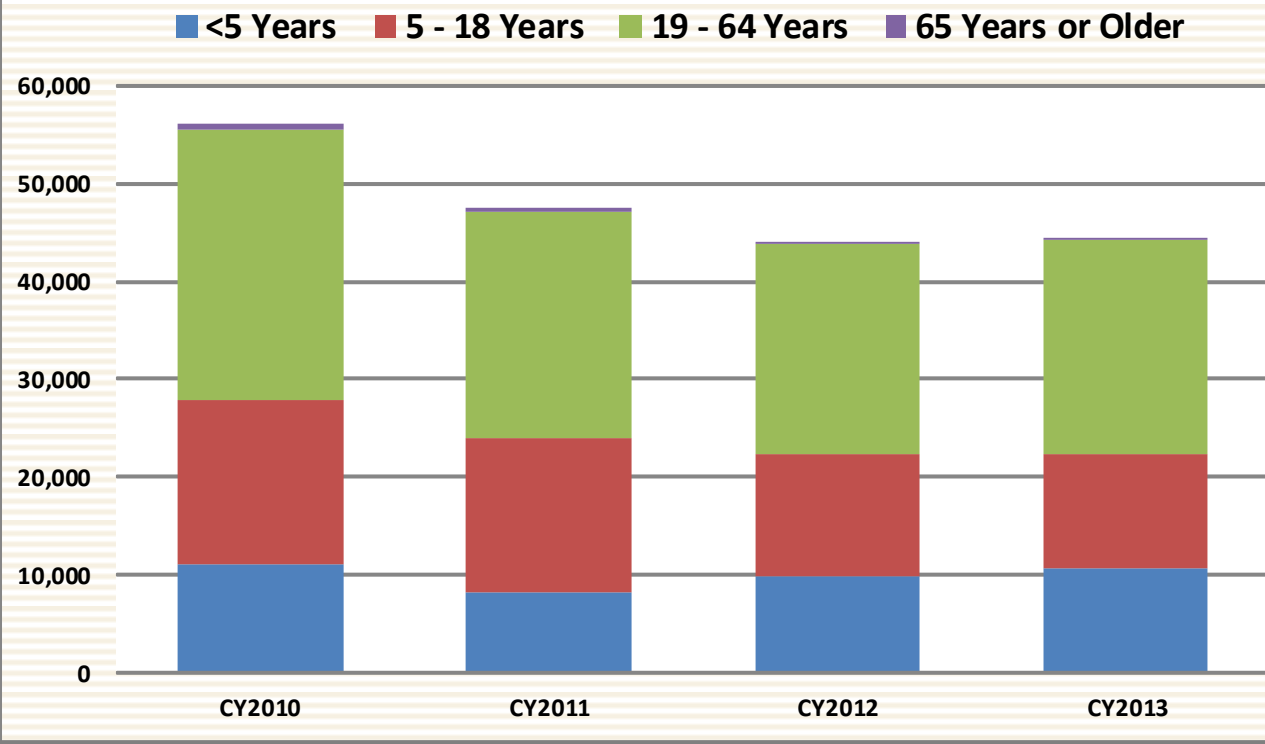
A total of 7,682 volunteer hours in 2013 resulted in a value of time equal to \$379,477.55

“Prior to my internship, I was not aware of all the services the department offered.... to the people in the community. I was glad to have gotten a first-hand experience in how everyone works hard to serve the people in Orange County”KJ

100 MPH
The speed of a sneeze

COMMUNITY IMPACT

DOH-Orange Client Count for Personal Health Services
By Age Group



#1
Cause of death for American women...heart disease

COMMUNITY IMPACT

Emergency Operations



Beginning July 1, 2013, the Central Florida Medical Reserve Corps (MRC) unit is now facilitated by the DOH-Orange Emergency Operations Program .

This unit covers Brevard, Orange, Osceola, and Seminole counties with volunteers to support disaster response agencies and health departments that may become overwhelmed by the need for medical care for our residents.

MRC members are trained and assist during times of need and may be asked to respond out-of-the-area for declared disasters or in a national response. Anyone working, or living in Orange, Brevard, Osceola, or Seminole Counties may join the Central Florida MRC Unit.

The Central Florida MRC participated in many activities in 2013 providing 808 hours of service at a value of \$21,367.79 Currently, the MRC Unit has 148 volunteers ready to respond.

All volunteers are needed to support disaster response. No medical experience or training is required. Health professionals such as: physicians, nurses, pharmacists, emergency personnel, behavioral health specialist, dentists, infectious disease specialists/epidemiologists, and medical technicians can volunteer. Volunteers without a medical background including interpreters, chaplains, amateur radio operators, warehouse and general volunteers are needed to fill support roles. To learn more, or to register, visit www.SERVFL.com.

The DOH-Orange County participated in one of the largest full scale exercises in the state of Florida. The Florida Department of Health Region V Points of Dispensing (POD) exercise was a component of Operation Crash and Surge Full Scale Exercise. The exercise was sponsored by the Orlando/Orange Urban Areas Security Initiative and CDC's Cities Readiness Initiative (CRI). CRI is a federally funded program designed to enhance preparedness to respond to a large-scale bioterrorist event by dispensing antibiotics to the entire population of an identified Metropolitan Statistical Area (MSA) within 48 hours.



Operation Crash and Surge scenario included a plane crash, a mass casualty incident, medical surge and bioterrorism event to satisfy the requirements of the sponsoring grants. Over 60 agencies and 1,500 participants made this one of the largest single day exercises ever in the state of Florida. Exercise sites were spread throughout Orange, Osceola, and Seminole Counties.

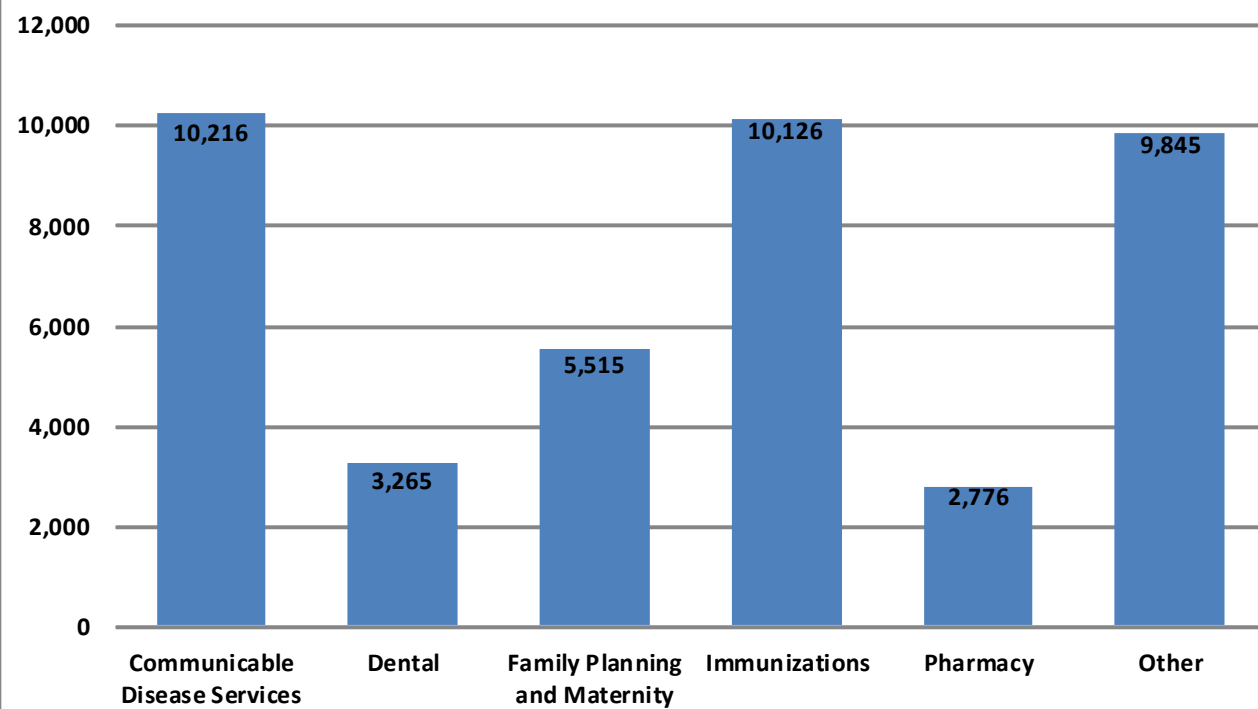


120/80 (or lower)
Considered to be
normal blood pressure

COMMUNITY IMPACT



DOH-Orange Client Count for
Personal Health Services by
Department for Calendar Year 2013



1-800-799-7233
The National Domestic Violence
Hotline phone number

COMMUNITY IMPACT

DOH-Orange Client Count for Personal Health Services
by Race and Ethnicity

