



AREA 7 HIV/AIDS SURVEILLANCE DATA REPORT

JANUARY-JUNE 2016

REPORTED AIDS CASES

JANUARY-JUNE 2016

REPORTED HIV INFECTION CASES (REGARDLESS OF AIDS STATUS)

County	Adults		Children <13yrs		Total	
	#	%	#	%	#	%
Brevard	17	9%	0	0%	17	9%
Orange	130	69%	0	0%	130	69%
Osceola	22	12%	0	0%	22	12%
Seminole	19	10%	0	0%	19	10%
Total	188	100%	0	0%	188	100%

*Data in chart excludes cases reported from within the Department of Corrections

GENDER

Gender	#	%
Female	43	23%
Male	145	77%
Total	188	100%

RACE

Race/Ethnicity	#	%
White, non-Hispanic	48	26%
Black, non-Hispanic	78	41%
Hispanic	53	28%
Other, non-Hispanic	9	5%
Total	188	100%

AGE AT DIAGNOSIS

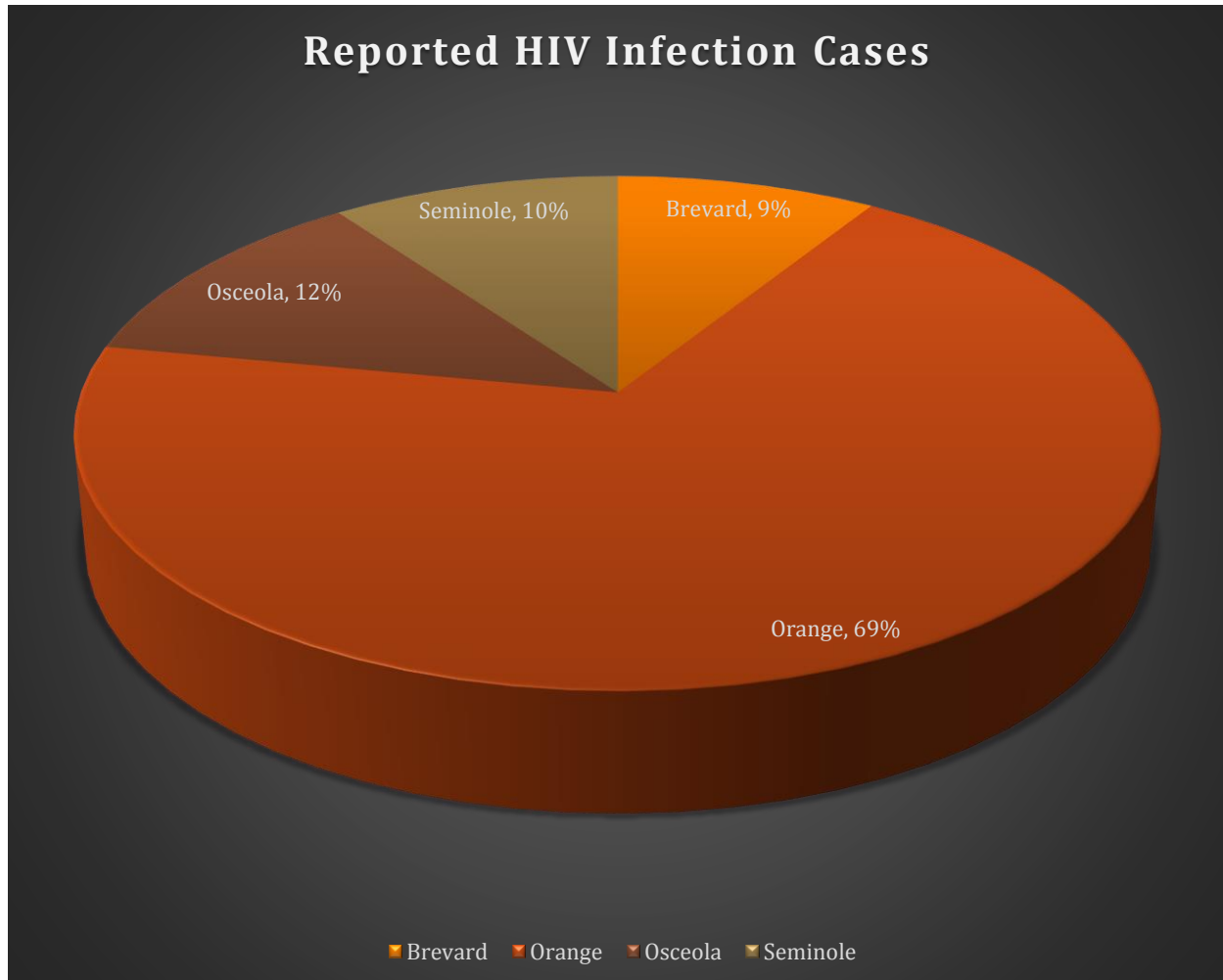
Age at Dx	#	%
00-12	0	0%
13-19	2	1%
20-29	43	23%
30-39	48	26%
40-49	32	17%
50+ years	63	34%
Total	188	100%

MODE OF TRANSMISSION

Mode of Exposure	Males		Females		Total	
	#	%	#	%	#	%
MSM	80	55%			80	43%
IDU	8	6%	5	12%	13	7%
MSM/IDU	4	3%			4	2%
Hetero	11	8%	18	42%	29	15%
Perinatal	1	1%	0	0%	1	1%
NIR	41	28%	20	47%	61	32%
Total	145	100%	43	100%	188	100%

REPORTED AIDS CASES*

JANUARY-MARCH 2016



*Current HIV Infection data by year of report reflects any case meeting the CDC definition of 'HIV infection' which includes all newly reported HIV cases and newly reported AIDS cases with no previous report of HIV in Florida. If a case is later identified as being previously diagnosed and reported from another state, the case will no longer be reflected as a Florida case and the data will be adjusted accordingly. Data from the most recent calendar year (2015) are considered provisional and therefore should not be used to confirm or rule out an increase in newly reported cases in Florida. The final year-end numbers are generated in July of the following year, after duplicate cases are removed from the dataset, as is customary of HIV surveillance in the US.

REPORTED HIV INFECTION

JANUARY- JUNE 2016

REPORTED AIDS CASES

County	Adults		Children <13yrs		Total	
	#	%	#	%	#	%
Brevard	50	10%	0	0%	50	10%
Orange	312	63%	3	0%	315	64%
Osceola	67	14%	0	0%	67	14%
Seminole	63	13%	0	0%	63	13%
Total	492	100%	3	0%	495	100%

*Data in chart excludes cases reported from within the Department of Corrections

GENDER

Gender	#	%
Female	99	20%
Male	396	80%
Total	495	100%

RACE

Race/Ethnicity	#	%
White, non-Hispanic	155	31%
Black, non-Hispanic	179	36%
Hispanic	147	30%
Other, non-Hispanic	14	3%
Total	495	100%

AGE AT DIAGNOSIS

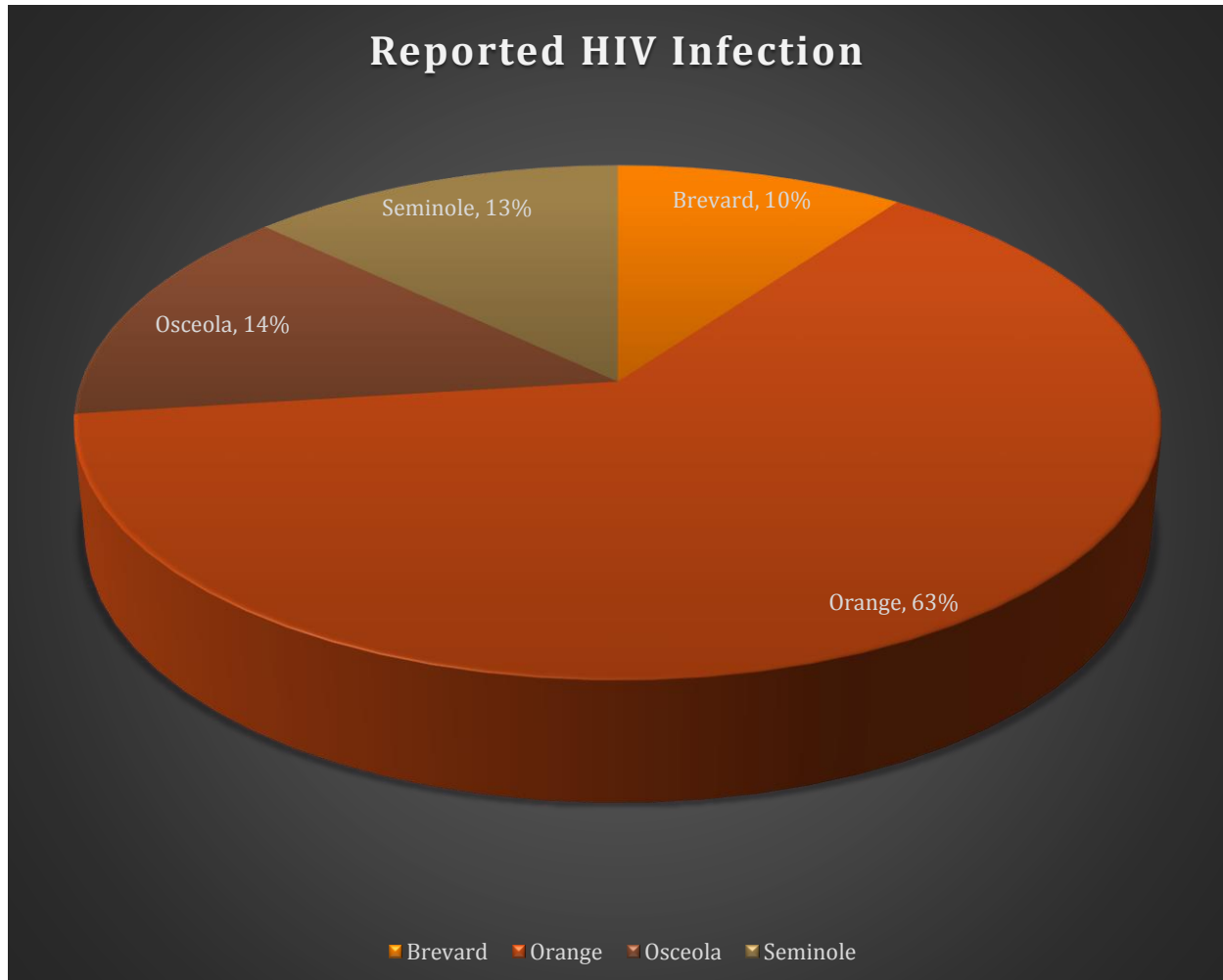
Age at Dx	#	%
00-12	3	1%
13-19	20	4%
20-29	155	31%
30-39	129	26%
40-49	81	16%
50+ years	107	22%
Total	495	100%

MODE OF TRANSMISSION

Mode of Exposure	Males		Females		Total	
	#	%	#	%	#	%
MSM	240	61%			240	48%
IDU	12	3%	6	6%	18	4%
MSM/IDU	5	1%			5	1%
Hetero	12	3%	37	37%	49	10%
Perinatal	2	1%	0	0%	2	0%
Other	1	0%				
NIR	124	31%	56	57%	180	36%
Total	396	100%	99	100%	495	100%

REPORTED HIV INFECTION*

JANUARY- JUNE 2016



*Current HIV Infection data by year of report reflects any case meeting the CDC definition of 'HIV infection' which includes all newly reported HIV cases and newly reported AIDS cases with no previous report of HIV in Florida. If a case is later identified as being previously diagnosed and reported from another state, the case will no longer be reflected as a Florida case and the data will be adjusted accordingly. Data from the most recent calendar year (2015) are considered provisional and therefore should not be used to confirm or rule out an increase in newly reported cases in Florida. The final year-end numbers are generated in July of the following year, after duplicate cases are removed from the dataset, as is customary of HIV surveillance in the US.

CUMULATIVE DATA THROUGH JUNE 2016*

REPORTED AIDS CASES BY COUNTY OF RESIDENCE AT DIAGNOSIS

County	Adults		Children <13yrs		Total	
	#	%	#	%		
Brevard	1846	15%	11	11%	1857	14%
Orange	8657	68%	65	67%	8722	68%
Osceola	938	7%	13	13%	951	7%
Seminole	1285	10%	8	8%	1293	10%
Total	12726	100%	97	100%	12823	100%

*Data in chart excludes cases reported from within the Department of Corrections

VITAL STATUS OF AIDS CASES

County	Alive	Dead	Total	% Dead
Brevard	787	1059	1846	57%
Orange	4189	4468	8657	52%
Osceola	511	427	938	46%
Seminole	580	705	1285	55%
Total	6067	6659	12726	52%

REPORTED HIV (NOT AIDS) CASES BY COUNTY OF RESIDENCE AT DIAGNOSIS

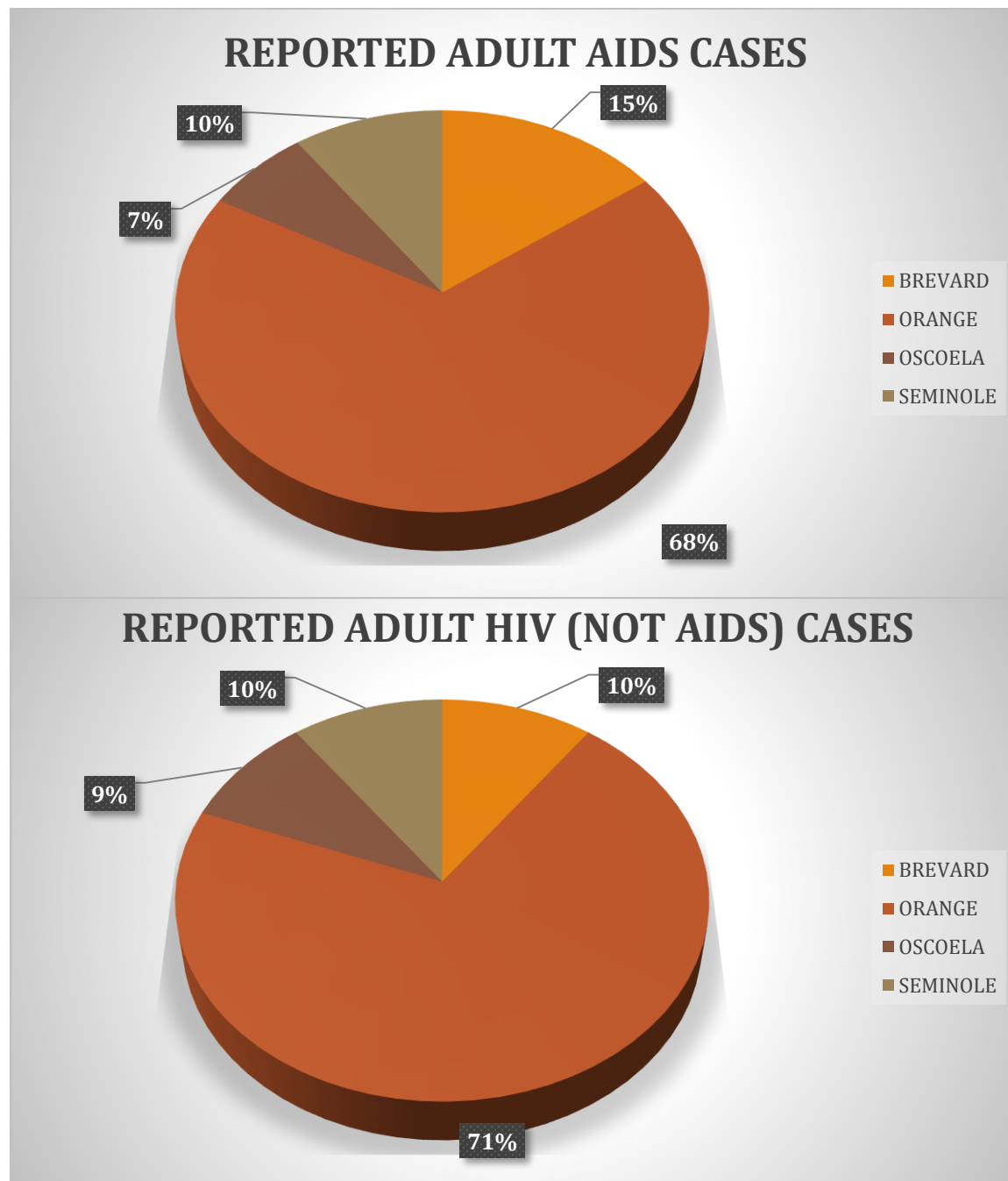
County	Adults		Children <13yrs		Total	
	#	%	#	%	#	%
Brevard	640	10%	6	8%	646	10%
Orange	4383	70%	61	76%	4444	70%
Osceola	588	9%	8	10%	596	9%
Seminole	614	10%	5	6%	619	10%
Total	6225	100%	80	100%	6305	100%

*Data in chart excludes cases reported from within the Department of Corrections

VITAL STATUS OF ADULT HIV (NOT AIDS) CASES

County	Alive	Dead	Total	% Dead
Brevard	572	68	640	11%
Orange	4072	309	4381	7%
Osceola	548	40	588	7%
Seminole	570	44	614	7%
Total	5762	461	6223	7%

CUMULATIVE DATA THROUGH DECEMBER 31, 2015*



* Please note that vital status data in this table is calculated differently than for the tables that follow. Living data on the next pages are calculated based on current age whereas the table above is calculated based on age at diagnosis therefore, there is a small difference between the two because a small number were children <13yrs at diagnosis whose current age makes them adults.

*Please note with greater than 50% of the AIDS cases are dead more relevant date to program planning are found within the living data tables.

PERSONS LIVING WITH AIDS IN AREA 7

Reported through June 2016

County	Adults		<13yrs		Total	
	#	%	#	%	#	%
Brevard	761	14%	1	33%	762	14%
Orange	3798	69%	2	67%	3800	69%
Osceola	441	8%	0	0%	441	8%
Seminole	527	10%	0	0%	527	10%
Total	5527	100%	3	100%	5530	100%

GENDER LIVING ADULT HIV (NOT AIDS) CASES

Gender	Brevard		Orange		Osceola		Seminole		Total	
	#	%	#	%	#	%	#	%	#	%
Female	251	33%	1008	27%	131	30%	134	25%	1524	28%
Male	510	67%	2790	73%	310	70%	393	75%	4003	72%
Total	761	100%	3798	100%	441	100%	527	100%	5527	100%

RACE/ETHNICITY LIVING ADULT HIV (NOT AIDS) CASES

Race / Ethnicity	Brevard		Orange		Osceola		Seminole		Total	
	#	%	#	%	#	%	#	%	#	%
White	374	49%	1143	30%	112	25%	202	38%	1831	33%
Black	310	41%	1744	46%	90	20%	208	39%	2352	43%
Hispanic	63	8%	825	22%	231	52%	99	19%	1218	22%
Other	14	2%	86	2%	8	2%	18	3%	126	2%
Total	761	100%	3798	100%	441	100%	527	100%	5527	100%

CURRENT AGE LIVING WITH HIV (NOT AIDS) CASES

Current Age	Brevard		Orange		Osceola		Seminole		Total	
	#	%	#	%	#	%	#	%	#	%
13-19	3	0%	17	0%	1	0%	1	0%	22	0%
20-24	11	1%	46	1%	4	1%	11	2%	72	1%
25-29	22	3%	151	4%	24	5%	19	4%	216	4%
30-39	68	9%	544	14%	53	12%	74	14%	739	13%
40-49	171	22%	947	25%	111	25%	133	25%	1362	25%
50-59	319	42%	1422	37%	174	39%	189	36%	2104	38%
60-64	90	12%	360	9%	32	7%	59	11%	541	10%
65-69	48	6%	187	5%	24	5%	25	5%	284	5%
70+ years	29	4%	124	3%	18	4%	16	3%	187	3%
Total	761	100%	3798	100%	441	100%	527	100%	5527	100%

PERSONS LIVING WITH AIDS IN AREA 7*

MODE OF TRANSMISSION LIVING ADULT HIV (NOT AIDS) CASES

Males

Mode of Transmission	Brevard		Orange		Osceola		Seminole		Total	
	#	%	#	%	#	%	#	%	#	%
MSM	296	58%	1885	68%	174	56%	263	67%	2618	65%
IDU	52	10%	260	9%	51	16%	36	9%	399	10%
MSM/IDU	31	6%	131	5%	18	6%	14	4%	194	5%
Hetero	60	12%	250	9%	32	10%	35	9%	377	9%
Other	3	1%	3	0%	1	0%	1	0%	8	0%
Perinatal	4	1%	22	1%	5	2%	5	1%	36	1%
NIR	64	13%	239	9%	29	9%	39	10%	371	9%
Total	510	100%	2790	100%	310	100%	393	100%	4003	100%

Females

Mode of Transmission	Brevard		Orange		Osceola		Seminole		Total	
	#	%	#	%	#	%	#	%	#	%
IDU	39	16%	141	14%	16	12%	23	17%	219	14%
Hetero	158	63%	702	70%	91	69%	77	57%	1028	67%
Other	5	2%	7	1%	1	1%	1	1%	14	1%
Perinatal	9	4%	19	2%	5	4%	8	6%	41	3%
NIR	40	16%	139	14%	18	14%	25	19%	222	15%
Total	251	100%	1008	100%	131	100%	134	100%	1524	100%

*Acronyms: MSM=men who have sex with men, IDU= injection drug use/needle-sharing, other=received HIV-contaminated blood products or tissue, Hetero=sex with HIV+ person of opposite sex, Perinatal=persons with a blood exposure as a child or perinatal transmission, NIR=no identified risk.

* Data on persons living with HIV disease and AIDS best represents the demographic make-up of persons in need of care in the community. These data are most useful for program planning for both prevention and patient care purposes.

*Data in all tables calculated based on current age

PERSONS LIVING WITH HIV IN AREA 7

Reported through December 31, 2015

County	Adults		<13yrs		Total	
	#	%	#	%	#	%
Brevard	768	11%	2	9%	770	11%
Orange	4725	68%	19	83%	4744	68%
Osceola	793	11%	0	0%	793	11%
Seminole	692	10%	2	9%	694	10%
Total	6978	100%	23	100%	7001	100%

GENDER LIVING ADULT AIDS CASES

Gender	Brevard		Orange		Osceola		Seminole		Total	
	#	%	#	%	#	%	#	%	#	%
Female	245	32%	1188	25%	248	31%	173	25%	1854	27%
Male	523	68%	3537	75%	545	69%	519	75%	5124	73%
Total	768	100%	4725	100%	793	100%	692	100%	6978	100%

RACE/ETHNICITY LIVING ADULT AIDS CASES

Race / Ethnicity	Brevard		Orange		Osceola		Seminole		Total	
	#	%	#	%	#	%	#	%	#	%
White	416	54%	1470	31%	171	22%	271	39%	2328	33%
Black	245	32%	1913	40%	141	18%	235	34%	2534	36%
Hispanic	86	11%	1229	26%	470	59%	166	24%	1951	28%
Other	21	3%	113	2%	11	1%	20	3%	165	2%
Total	768	100%	4725	100%	793	100%	692	100%	6978	100%

CURRENT AGE LIVING WITH AIDS CASES

Current Age	Brevard		Orange		Osceola		Seminole		Total	
	#	%	#	%	#	%	#	%	#	%
13-19	7	1%	52	1%	5	1%	1	0%	65	1%
20-24	26	3%	221	5%	38	5%	46	7%	331	5%
25-29	66	9%	483	10%	75	9%	78	11%	702	10%
30-39	156	20%	1061	22%	141	18%	132	19%	1490	21%
40-49	165	21%	1217	26%	198	25%	171	25%	1751	25%
50-59	241	31%	1156	24%	211	27%	175	25%	1783	26%
60-64	44	6%	284	6%	77	10%	47	7%	452	6%
65-69	34	4%	145	3%	29	4%	24	3%	232	3%
70+ years	29	4%	106	2%	19	2%	18	3%	172	2%
Total	768	100%	4725	100%	793	100%	692	100%	6978	100%

PERSONS LIVING WITH AIDS IN AREA 7*

MODE OF TRANSMISSION LIVING ADULT AIDS CASES

Males

<i>Mode of Transmission</i>	<i>Brevard #</i>	<i>Brevard %</i>	<i>Orange #</i>	<i>Orange %</i>	<i>Osceola #</i>	<i>Osceola %</i>	<i>Seminole #</i>	<i>Seminole %</i>	<i>Total #</i>	<i>Total %</i>
MSM	340	65%	2588	73%	333	61%	367	71%	3628	71%
IDU	33	6%	177	5%	78	14%	19	4%	307	6%
MSM/IDU	24	5%	131	4%	25	5%	30	6%	210	4%
Hetero	52	10%	252	7%	41	8%	45	9%	390	8%
Other	1	0%	3	0%	1	0%	0	0%	5	0%
Perinatal	7	1%	25	1%	11	2%	4	1%	47	1%
NIR	66	13%	361	10%	56	10%	54	10%	537	10%
Total	523	100%	3537	100%	545	100%	519	100%	5124	100%

Females

<i>Mode of Transmission</i>	<i>Brevard #</i>	<i>Brevard %</i>	<i>Orange #</i>	<i>Orange %</i>	<i>Osceola #</i>	<i>Osceola %</i>	<i>Seminole #</i>	<i>Seminole %</i>	<i>Total #</i>	<i>Total %</i>
IDU	31	13%	144	12%	32	13%	16	9%	223	12%
Hetero	155	63%	788	66%	155	63%	114	66%	1212	65%
Other	1	0%	3	0%	0	0%	0	0%	4	0%
Perinatal	5	2%	27	2%	9	4%	4	2%	45	2%
NIR	53	22%	226	19%	52	21%	39	23%	370	20%
Total	245	100%	1188	100%	248	100%	173	100%	1854	100%

*Acronyms: MSM=men who have sex with men, IDU= injection drug use/needle-sharing, other=received HIV-contaminated blood products or tissue, Hetero=sex with HIV+ person of opposite sex, Perinatal=persons with a blood exposure as a child or perinatal transmission, NIR=no identified risk.

* Data on persons living with HIV disease and AIDS best represents the demographic make-up of persons in need of care in the community. These data are most useful for program planning for both prevention and patient care purposes.

*Data in all tables calculated based on current age

Florida Law (s384.25, F.S.) requires cases for AIDS reported by anyone who diagnoses or treats a person with AIDS. A person who test positive of Human Immunodeficiency Virus (HIV) on or after July 1, 1997 is also reportable.

Note: There is a \$500 fine per case for failure to report.

Confidentiality is strictly enforced and guaranteed. Please comply with all information security and mailing protocols.

To report a case please contact one of the following:

NAME	TITLE	NUMBER
KARA WILLIAMS (ORANGE, OSCEOLA, & SEMINOLE)	Sr. Surveillance Manager	407-858-1400 Ext. 1214
DIANE FRANTA (BREVARD)	Surveillance Coordinator	321-639-5802 Ext. 1708

For Additional Data Requests please contact the Lori Maddox
(Lorene.Maddox@flhealth.gov) or Madgene Moise
(Madgene.Moise@flhealth.gov)