



Epidemiology Year-End Surveillance Report

Florida Department of Health in Orange County

2018 Year-End Overview

Outbreaks Reported to the Florida Department of Health in Orange County, FL 2018, by Illness and Count

ILLNESS	COUNT
Gastroenteritis	
Foodborne	5
Person to Person	7
Animal to Person	2
Unknown	11
Respiratory	
Waterborne	5
Person to Person	20
Rash	
Airborne	0
Person to Person	9
TOTAL	59

December 2018

Contents:

<u>Outbreaks Investigated in Orange County, FL</u>	1
<u>Reportable Disease Table</u>	2-3
<u>Select Disease Trends</u>	4-5
<u>Resources</u>	5-6

ALL DATA ARE PROVISIONAL

Data Source: DOH- Orange Epidemiology Program

2018 Cumulative Reportable Disease Table (1 of 2)

Disease	Orange County		All Counties	
	2018	Median (2013 - 2017)	2018	Median (2013 - 2017)
Amebic Infections (Acanthamoeba)	0	0	1	0
Amebic Infections (Balamuthia mandrillaris)	0	0	3	0
Amebic Infections (Naegleria fowleri)	0	0	0	0
Anaplasmosis - HGA (Anaplasma phagocytophilum)	3	0	23	8
Arboviral Disease: Other	0	0	1	0
Arsenic Poisoning	0	0	17	14
Botulism: Infant	0	0	1	0
Brucellosis	0	0	17	10
California Serogroup Virus Neuroinvasive Disease	0	0	3	0
Campylobacteriosis	219	136	4840	3713
Carbon Monoxide Poisoning	7	18	249	271
Chikungunya Fever	1	0	7	10
Cholera (Vibrio cholerae Type O1)	0	0	0	3
Ciguatera Fish Poisoning	3	2	75	52
Creutzfeldt-Jakob Disease (CJD)	0	1	20	25
Cryptosporidiosis	28	40	606	591
Cyclosporiasis	8	2	82	37
Dengue Fever	4	4	89	85
Dengue Fever: Severe	0	0	4	0
Eastern Equine Encephalitis Neuroinvasive Disease	0	0	3	1
Ehrlichiosis - HME (Ehrlichia chaffeensis)	1	1	49	22
Escherichia coli: Shiga Toxin-Producing (STEC) Infection	68	22	895	525
Flavivirus Disease and Infection	0	0	7	0
Giardiasis: Acute	58	70	1118	1122
Gonorrhea	2951	2224	32400	24027
Gonorrhea - Resistant	0	0	1	5
Gonorrheal Ophthalmia Neonatorum	0	0	2	3
Haemophilus influenzae Invasive Disease	23	18	319	282
Hansen's Disease (Leprosy)	1	1	22	18
Hemolytic Uremic Syndrome (HUS)	0	1	9	8
Hepatitis A	100	4	601	136
Hepatitis B: Acute	39	18	803	536
Hepatitis B: Chronic	472	435	5044	4970
Hepatitis B: Perinatal	0	0	2	1
Hepatitis B: Surface Antigen in Pregnant Women	27	58	391	486
Hepatitis C: Acute	17	9	437	226
Hepatitis C: Chronic	1842	1273	22599	25361
Hepatitis C: Perinatal	1	0	29	1
Hepatitis D	1	0	5	1
Hepatitis E	0	0	7	5
Herpes B Virus: Possible Exposure	1	0	20	5
Influenza-Associated Pediatric Mortality	1	1	10	6
Legionellosis	53	25	716	350

ALL DATA ARE PROVISIONAL

Data Source: ESSENCE

2018 Cumulative Reportable Disease Table (2 of 2)

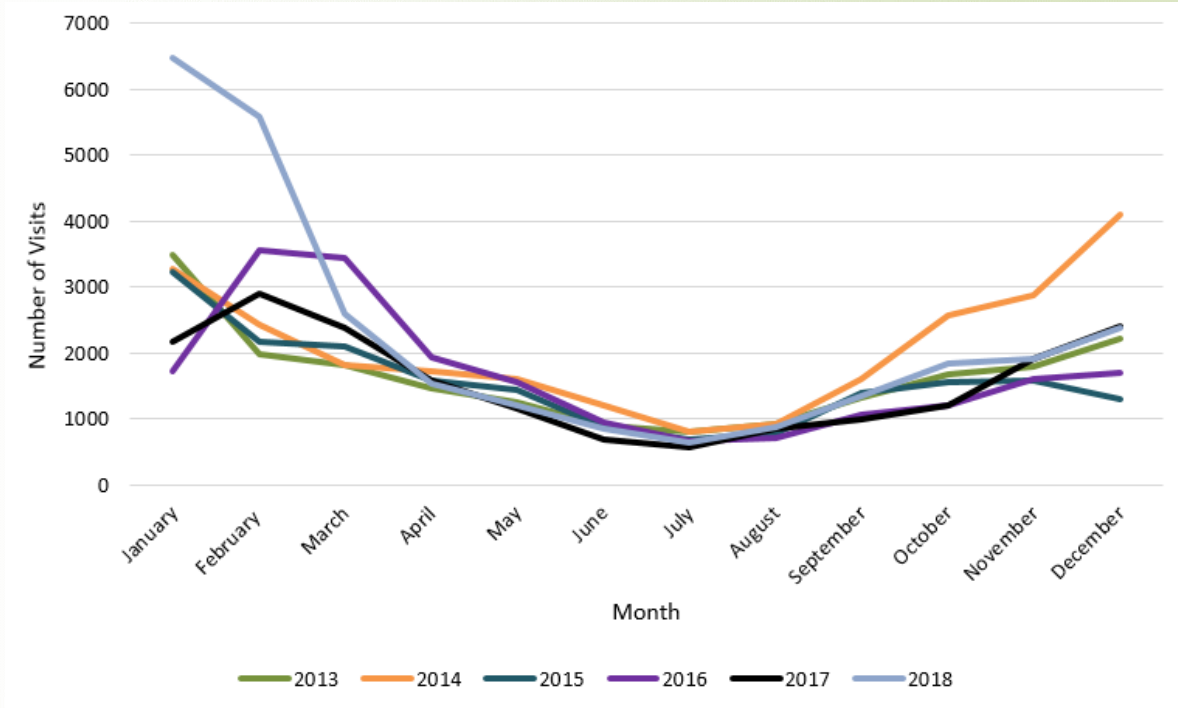
Disease	Orange County		All Counties	
	2018	Median (2013 - 2017)	2018	Median (2013 - 2017)
Leptospirosis	0	0	7	2
Listeriosis	5	3	57	45
Lyme Disease	4	5	226	210
Malaria	4	7	70	68
Measles (Rubeola)	0	0	19	5
Meningitis: Bacterial or Mycotic	3	1	117	125
Meningococcal Disease	4	2	22	25
Mercury Poisoning	0	0	38	20
Mumps	9	1	188	19
Neurotoxic Shellfish Poisoning	0	0	1	0
Paratyphoid Fever (Salmonella Serotypes Paratyphi A B C)	0	0	1	6
Pertussis	11	27	333	365
Pesticide-Related Illness and Injury: Acute	4	0	51	62
Q Fever: Acute (Coxiella burnetii)	0	0	1	2
Q Fever: Chronic (Coxiella burnetii)	0	0	1	0
Rabies: Possible Exposure	69	85	4112	3394
Ricin Toxin Poisoning	0	0	4	1
Rocky Mountain Spotted Fever and Spotted Fever Rickettsiosis	1	1	44	25
Rubella	0	0	0	1
Salmonellosis	392	337	7101	6430
Saxitoxin Poisoning (Paralytic Shellfish Poisoning)	0	0	4	0
Scombroid Poisoning	1	0	36	0
Shigellosis	139	105	1546	1332
Staphylococcus aureus Infection: Intermediate Resistance to Vancomycin (VISA)	0	0	2	5
Strep pneumoniae Invasive Disease: Drug-Resistant	26	23	242	270
Strep pneumoniae Invasive Disease: Drug-Susceptible	24	22	397	412
Tularemia (Francisella tularensis)	0	0	4	1
Typhoid Fever (Salmonella Serotype Typhi)	19	1	179	15
Varicella (Chickenpox)	44	20	925	672
Vibriosis (Grimontia hollisae)	0	0	7	2
Vibriosis (Other Vibrio Species)	1	0	68	14
Vibriosis (Vibrio alginolyticus)	3	2	76	65
Vibriosis (Vibrio cholerae Type Non-O1)	0	0	7	13
Vibriosis (Vibrio fluvialis)	0	0	12	15
Vibriosis (Vibrio mimicus)	0	0	0	8
Vibriosis (Vibrio parahaemolyticus)	1	1	48	48
Vibriosis (Vibrio vulnificus)	0	1	47	48
West Nile Virus Neuroinvasive Disease	0	0	34	6
West Nile Virus Non-Neuroinvasive Disease	0	0	12	2
Zika Virus Disease and Infection- Congenital	0	0	1	0
Zika Virus Disease and Infection- Non-Congenital	44	0	204	2
Total	6872	5038	92072	77583

ALL DATA ARE PROVISIONAL

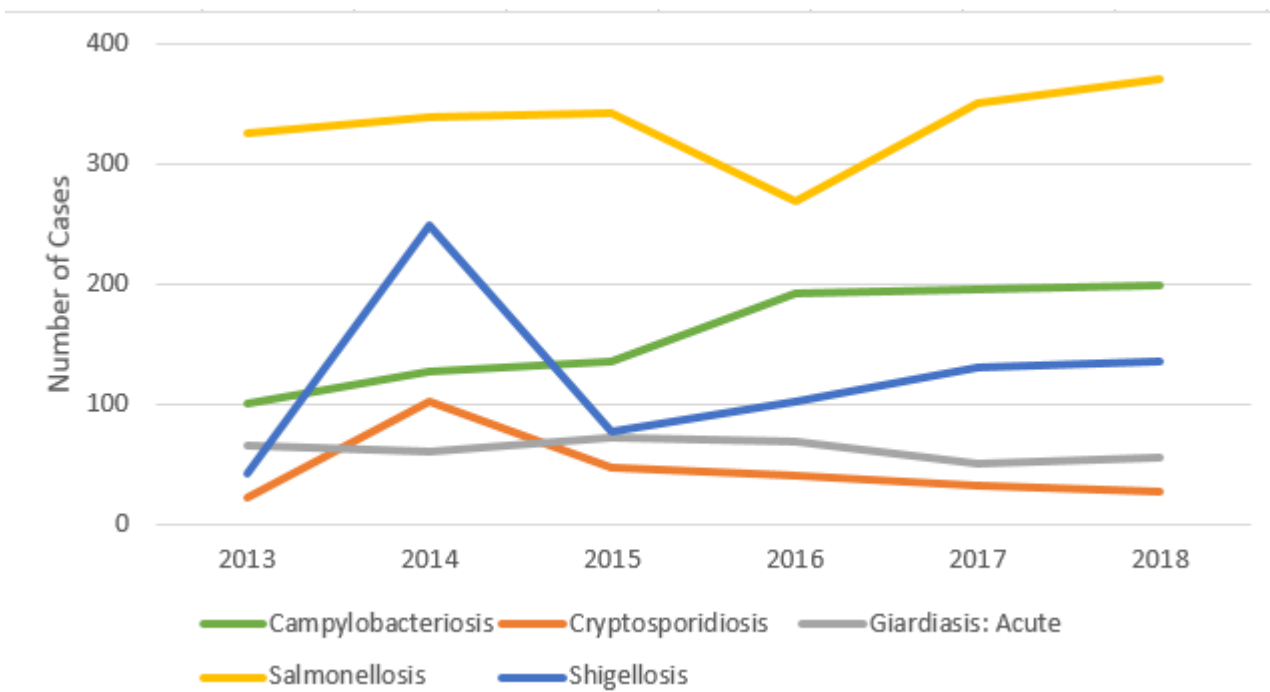
Data Source: ESSENCE

Select Disease Trends

Emergency Department Visits due to Influenza-like Illness, Orange County, FL, 2013-2018



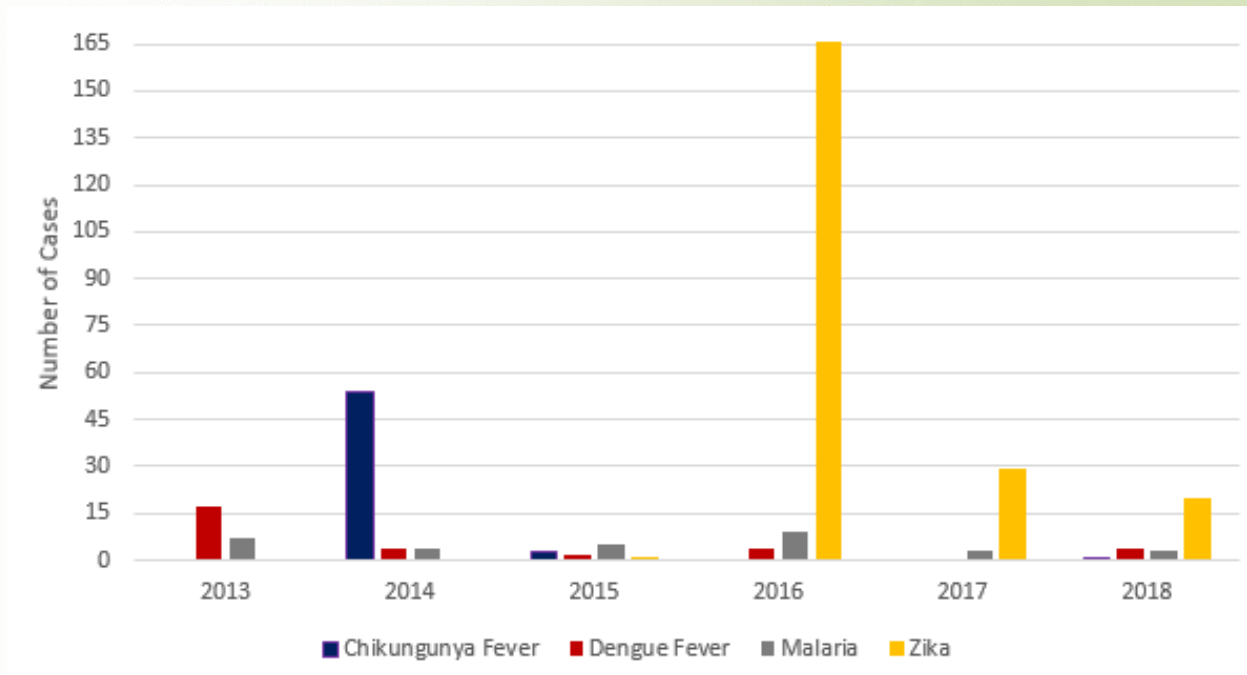
Select Reportable Enteric Diseases, Orange County, FL, 2013-2018



ALL DATA ARE PROVISIONAL

Data Source: ESSENCE

Arboviral Illnesses, Orange County, FL, 2013-2018



Other Disease Resources

In the structure of DOH-Orange, tuberculosis, sexually transmitted infections, and human immunodeficiency virus are housed in separate programs from the Epidemiology Program. We recognize the importance of these diseases for our community partners and for your convenience have provided a link for surveillance information on these diseases in Florida and Area 7 HIV & AIDS Program.

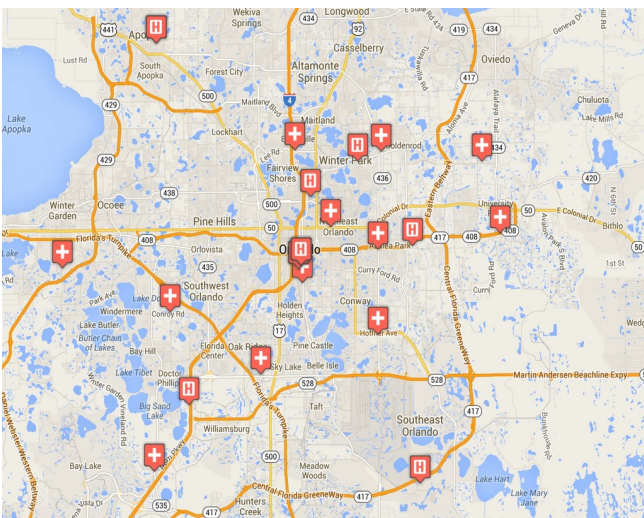
Resource: <http://orange.floridahealth.gov/programs-and-services/index.html>



Florida Department of Health: ESSENCE

Hospital linked to ESSENCE

Florida Hospital Centra Care Clinic linked to ESSENCE



Since 2007, the Florida Department of Health has operated the Electronic Surveillance System for the Early Notification of Community-based Epidemics (ESSENCE-FL), a state-wide electronic bio-surveillance system. The initial scope of ESSENCE was to aid in rapidly detecting adverse health events in the community based on Emergency Department (ED) chief complaints. In the following years, ESSENCE capabilities have continually evolved to currently allow for rapid data analysis, mapping, and visualization across several data sources, including ED record data, Merlin reportable disease data, Florida Poison Information Network consultations, and Florida Office of Vital Statistics death records. The majority of the information presented in this report comes via ESSENCE. Florida currently has 228 emergency departments and 35 urgent care centers reporting to ESSENCE-FL for a total of 263 facilities.

ALL DATA ARE PROVISIONAL

Data Source: ESSENCE

Florida Department of Health in Orange County

Epidemiology Program
6101 Lake Ellenor Drive
Orlando, Florida 32809

Phone: 407-858-1420

Fax: 407-858-5517

<http://orange.floridahealth.gov/>

Sign up for Electronic Health Alerts & Epidemiology

Monthly Surveillance Reports

Email Contact Information to:

CHD48.EPIRegistration@flhealth.gov

Follow the FL Department of Health in Orange County on

Twitter @GOHealthyOrange!



Issue Contributors:

Alvina Chu, MHS

Epidemiology Program Manager

Taylor Campion, MPH

Epidemiologist

Michelle Persaud, MPH

Epidemiologist

The Epidemiology Program conducts disease surveillance and investigates, controls, and prevents infectious diseases and conditions that are reported to DOH-Orange.

Surveillance is primarily conducted through passive reporting from the medical community as required by Chapter 381, Florida Statutes.

Data are collected and analyzed to track disease trend, and identify outbreaks and unusual occurrences for response and mitigation, to identify targets for prevention and reduction efforts.

In cooperation with the Office of Emergency Operations, the Epidemiology Program conducts syndromic and influenza-like-illness surveillance activities. Syndromic surveillance was added to the disease reporting process as an active method of determining activities in the community that could be early indicators of outbreaks and bioterrorism.

Our staff ensure that action is taken to prevent infectious disease outbreaks from occurring in Orange County communities and area attractions. Along with many public and private health groups, we work for the prevention of chronic and long-term diseases in Central Florida.

ALL DATA ARE PROVISIONAL

