



# Epidemiology Year-end Surveillance Report

Florida Department of Health in Orange County

Volume 7, Issue 12

## 2016: Year-end Overview

Outbreaks Investigated by the Florida Department of Health in Orange County during 2016, by Mode of Transmission and Pathogen Type.

Mode of Transmission	Pathogen Type	Count
Foodborne	Viral	1
	Bacterial	0
	Marine Toxin	2
	Unknown/Other	9
Waterborne	Bacteria	1
Airborne	Chemical	2
Person-to-Person (Enteric)	Viral/Bacteria	8
	Unknown	4
Person-to-Person (Dermal)	Mite	3
	Other	3
Person-to-Person (Respiratory)	Viral	2
	Unknown	1
<b>Total</b>		<b>36</b>

<b>Total Foodborne Illness Complaints</b>	<b>213</b>
Florida Department of Business and Professional Regulation	193
Florida Department of Agriculture and Consumer Services	20

ALL DATA IS PROVISIONAL

## Reportable Disease Table 1 of 3

Disease	Orange County		Florida	
	2016	Mean (2011 - 2015)	2016	Mean (2011 - 2015)
Amebic Encephalitis	0	0	1	1
Anthrax	0	0	0	0
Arboviral Disease: Other	0	0	0	0
Arsenic Poisoning	0	0.4	24	8.6
Botulism: Foodborne	0	0	0	0
Botulism: Infant	0	0	0	0.4
Botulism: Other	0	0	0	0.2
Botulism: Wound	0	0	0	0
Brucellosis	0	0.8	10	9.6
California Serogroup Virus Neuroinvasive Disease	0	0	0	0.6
California Serogroup Virus Non-Neuroinvasive Disease	0	0	0	0
Campylobacteriosis	197	136.6	3713	2900.8
Carbon Monoxide Poisoning	17	9.8	275	167.2
Chikungunya Fever	0	12.4	11	121.8
Cholera (Vibrio cholerae Type O1)	1	0.6	1	6
Ciguatera Fish Poisoning	2	2	36	53.2
Creutzfeldt-Jakob Disease (CJD)	2	0.8	21	23.6
Crimean-Congo Hemorrhagic Fever	0	0	0	0
Cryptosporidiosis	41	41.2	592	823.6
Cyclosporiasis	2	1.4	37	39.6
Dengue Fever	5	10.4	83	116.4
Dengue Fever: Severe	0	0	1	0.4
Diphtheria	0	0	0	0
Eastern Equine Encephalitis Neuroinvasive Disease	0	0	2	1
Eastern Equine Encephalitis Non-Neuroinvasive Disease	0	0	0	0
Ebola Hemorrhagic Fever	0	0	0	0
Ehrlichiosis/Anaplasmosis (Ehrlichia ewingii)	0	0	0	0
Ehrlichiosis/Anaplasmosis: HME (Ehrlichia chaffeensis)	1	0.6	32	21.8
Ehrlichiosis/Anaplasmosis: Undetermined	0	0	0	0.2
Encephalitis (Other: Non-Arboviral) - Expired 6/4/2014	0	0.2	0	8.8
Escherichia coli: Shiga Toxin-Producing (STEC) Infection	34	19.2	663	455.2
Giardiasis: Acute	71	67.6	1141	1141
Glanders (Burkholderia mallei)	0	0	0	0
Guanarito Hemorrhagic fever	0	0	0	0
Haemophilus influenzae Invasive Disease	15	15.8	301	254.6
Hansen's Disease (Leprosy)	1	1	25	14.4
Hantavirus Infection: Non-Pulmonary Syndrome	0	0	0	0
Hantavirus Pulmonary Syndrome	0	0	0	0
Hemolytic Uremic Syndrome (HUS)	0	0.6	8	6.2
Hepatitis A	8	3.8	139	124.2
Hepatitis B: Acute	26	12.8	686	373.2
Hepatitis B: Chronic	477	402.2	5184	4534
Hepatitis B: Perinatal	0	0.2	0	0.8
Hepatitis B: Surface Antigen in Pregnant Women	45	60	399	476.4

## Reportable Disease Table 2 of 3

Disease	Orange County		Florida	
	2016	Mean (2011 - 2015)	2016	Mean (2011 - 2015)
Hepatitis C: Acute	6	10.2	297	181
Hepatitis C: Chronic	1727	1535.4	31793	29128.8
Hepatitis D	0	0	1	0.6
Hepatitis E	1	0.4	5	3.8
Hepatitis G	0	0.2	0	0.4
Herpes B Virus: Possible Exposure	0	0	2	6.2
Influenza A: Novel or Pandemic Strains	0	0	0	0.4
Influenza-Associated Pediatric Mortality	1	0.2	6	4.2
Junin Hemorrhagic Fever	0	0	0	0
Lassa Fever	0	0	0	0
Lead Poisoning	61	25.8	1127	829.4
Legionellosis	31	21.4	411	275.8
Leptospirosis	1	0.4	2	2
Listeriosis	2	2.4	44	41.8
Lujo Virus	0	0	0	0
Lyme Disease	8	4.2	423	165.8
Machupo Hemorrhagic Fever	0	0	0	0
Malaria	9	7.2	83	71.4
Marburg Fever	0	0	0	0
Measles (Rubeola)	0	1.4	6	5.8
Melioidosis (Burkholderia pseudomallei)	0	0.2	0	0.2
Meningitis: Bacterial or Mycotic	1	6.8	120	160.4
Meningococcal Disease	0	1	23	49.8
Mercury Poisoning	0	0.2	20	13.8
Middle East Respiratory Syndrome (MERS)	0	0.2	0	0.2
Mumps	2	0.8	29	16.6
Neurotoxic Shellfish Poisoning	0	0	0	0
Pertussis	34	29.8	346	539.4
Pesticide-Related Illness and Injury: Acute	0	8.6	29	145.2
Plague: Bubonic	0	0	0	0
Plague: Pneumonic	0	0	0	0
Poliomyelitis: Nonparalytic	0	0	0	0
Poliomyelitis: Paralytic	0	0	0	0
Psittacosis (Ornithosis)	0	0	0	0.4
Q Fever: Acute (Coxiella burnetii)	0	0	2	2.2
Q Fever: Chronic (Coxiella burnetii)	0	0	0	0
Rabies: Animal	0	0	0	0
Rabies: Human	0	0	0	0.2
Rabies: Possible Exposure	89	90.6	3397	2547
Ricin Toxin Poisoning	0	0.2	1	1
Rocky Mountain Spotted Fever - Expired 7/15/2014	0	0.2	0	13.2
Rocky Mountain Spotted Fever and Spotted Fever Rickettsiosis	0	0.8	41	12
Rubella	0	0	2	0.2
Rubella: Congenital Syndrome	0	0	0	0
Sabia-Associated Hemorrhagic Fever	0	0	0	0

ALL DATA IS PROVISIONAL

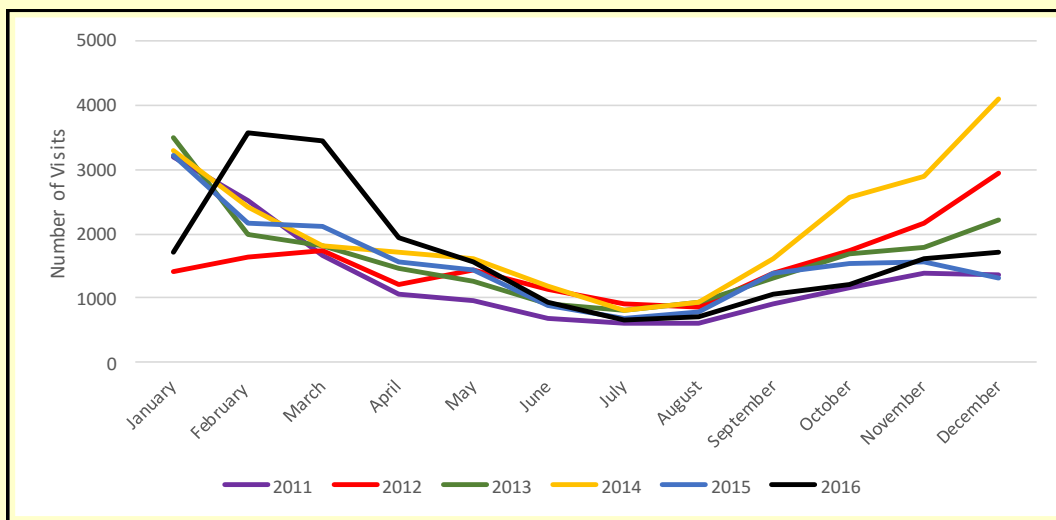
## Reportable Disease Table 3 of 3

Disease	Orange County		Florida	
	2016	Mean (2010 - 2015)	2016	Mean (2010 - 2015)
Salmonellosis	284	329.2	6452	6408.6
Saxitoxin Poisoning (Paralytic Shellfish Poisoning)	0	0	1	0.6
Severe Acute Respiratory Syndrome (SARS)	0	0	0	0
Shigellosis	105	149.6	991	2036
Smallpox	0	0	0	0
St. Louis Encephalitis Neuroinvasive Disease	0	0	0	0.4
St. Louis Encephalitis Non-Neuroinvasive Disease	0	0	0	0
Staphylococcal Enterotoxin B Poisoning	0	0	0	0.2
Staphylococcus aureus Infection: Intermediate Resistance to Vancomycin	0	0	4	5
Staphylococcus aureus Infection: Resistant to Vancomycin (VRSA)	0	0	0	0
Staphylococcus aureus: Community-Associated Mortality	0	0	0	8.2
Strep pneumoniae Invasive Disease: Drug-Resistant	23	28.8	206	448.8
Strep pneumoniae Invasive Disease: Drug-Susceptible	19	23.2	420	501.4
Streptococcal Invasive Disease (Group A)	0	10.6	0	198.8
Tetanus	0	0	5	3.8
Toxoplasmosis—Expired 6/4/2014	0	0.2	0	7
Trichinellosis (Trichinosis)	0	0	0	0
Tularemia (Francisella tularensis)	0	0	1	0.4
Typhoid Fever (Salmonella Serotype Typhi)	1	0.6	15	10.4
Typhus Fever	0	0	0	0
Typhus Fever: Endemic (Rickettsia typhi)	0	0	0	0.4
Typhus Fever: Epidemic (Rickettsia prowazekii)	0	0	0	0
Vaccinia Disease	0	0	0	0.4
Varicella (Chickenpox)	20	26.4	748	736.6
Venezuelan Equine Encephalitis Neuroinvasive Disease	0	0	0	0
Venezuelan Equine Encephalitis Non-Neuroinvasive Disease	0	0	0	0
Vibriosis (Grimontia hollisae)	0	0	2	2.2
Vibriosis (Other Vibrio Species)	0	0.2	25	10
Vibriosis (Vibrio alginolyticus)	3	1.8	63	57
Vibriosis (Vibrio cholerae Type Non-O1)	0	0.4	16	13
Vibriosis (Vibrio fluvialis)	0	0	5	9.4
Vibriosis (Vibrio mimicus)	0	0	4	7.2
Vibriosis (Vibrio parahaemolyticus)	1	0.4	53	42.6
Vibriosis (Vibrio vulnificus)	2	0.4	51	38.4
Viral Hemorrhagic Fever—Expired 1/4/2015	0	0	0	0
West Nile Virus Neuroinvasive Disease	0	0.4	7	21
West Nile Virus Non-Neuroinvasive Disease	0	0.2	5	7.2
Western Equine Encephalitis Neuroinvasive Disease	0	0	0	0
Western Equine Encephalitis Non-Neuroinvasive Disease	0	0	0	0
Yellow Fever	0	0	0	0
Zika Virus Disease and Infection—Congenital	2	0	7	0
Zika Virus Disease and Infection—Noncongenital	149	0	1396	0.4
<b>Total</b>	<b>3613</b>	<b>3224.8</b>	<b>66492</b>	<b>54552.8</b>

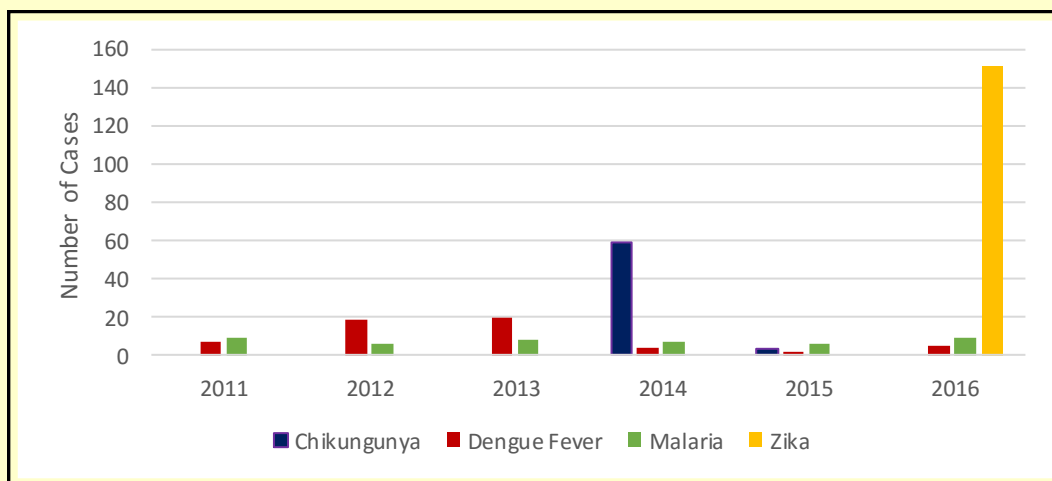
ALL DATA IS PROVISIONAL

## Select Disease Trends

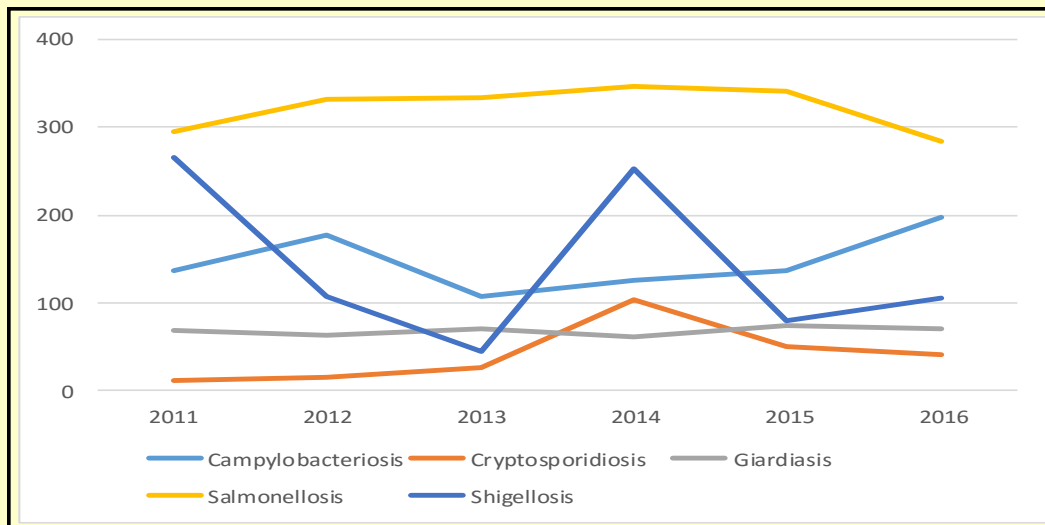
### Influenza-like Illness, Emergency Department/Urgent Care Visits, Orange County, Florida, 2011-2016, by Month



### Arboviral Illnesses, Orange County, Florida, 2011-2016



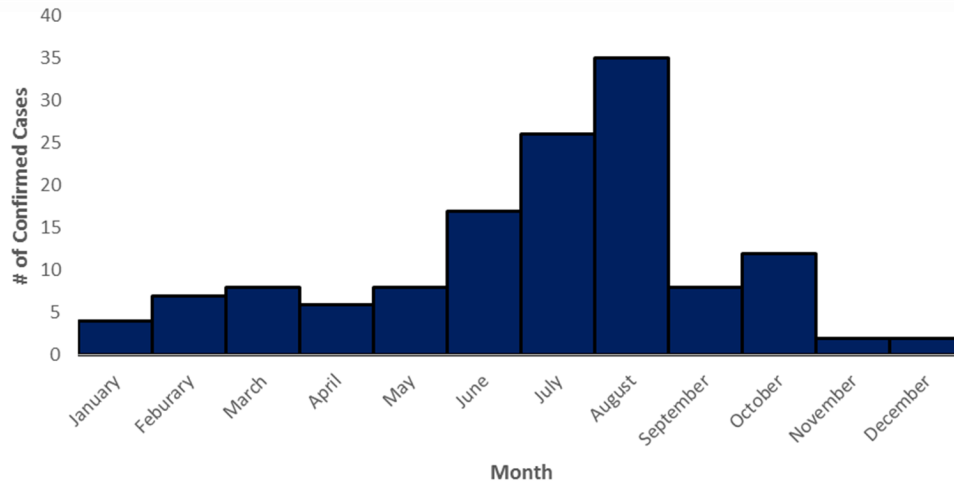
### Gastrointestinal Illness, Orange County, Florida 2011-2016, by Year



ALL DATA IS PROVISIONAL

## Select Disease Trends Continued...

### ESSENCE-FL: ZIKA Epidemic Curve of Travel Related Cases in Orange County FL, 2016



## Other Disease Resources

In the structure of DOH-Orange, tuberculosis, sexually transmitted infections, and human immunodeficiency virus are housed in separate programs from the Epidemiology Program. We recognize the importance of these diseases for our community partners and for your convenience have provided links for surveillance information on these diseases in [Florida](#) and [Orange County](#).



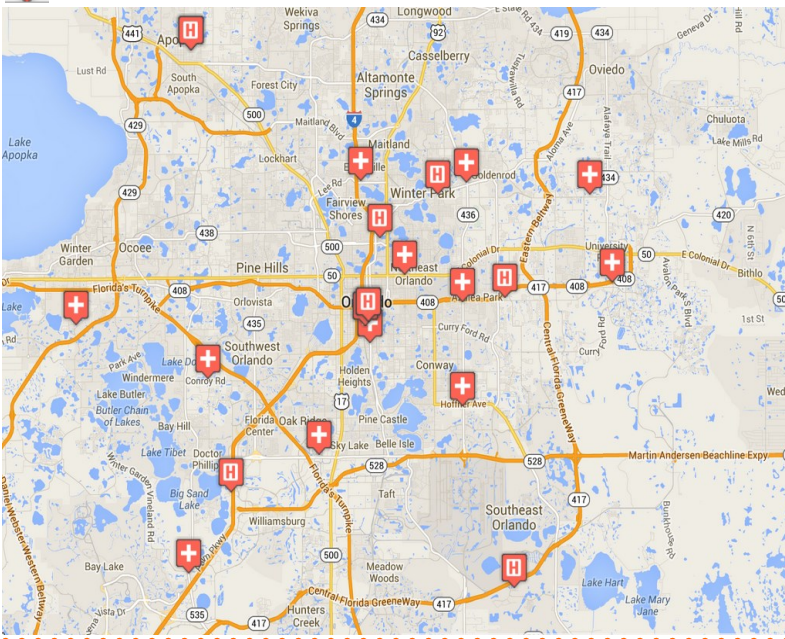
## Florida Department of Health: ESSENCE



Hospital linked to ESSENCE



Florida Hospital Centra Care Clinic linked to ESSENCE



Since 2007, the Florida Department of Health has operated the Early Notification of Community-based Epidemics (ESSENCE-FL), a state-wide electronic bio-surveillance system. The initial scope of ESSENCE was to aid in rapidly detecting adverse health events in the community based on Emergency Department (ED) chief complaints. In the following years, ESSENCE capabilities have continually evolved to currently allow for rapid data analysis, mapping, and visualization across several data sources, including ED record data, Merlin reportable disease data, Florida Poison Information Network consultations, and Florida Office of Vital Statistics death records. The majority of the information presented in this report comes from ESSENCE. Florida currently has 228 emergency departments and 35 urgent care centers reporting to ESSENCE-FL for a total of 263 facilities.

**ALL DATA IS PROVISIONAL**



## Florida Department of Health in Orange County

Epidemiology Program  
6101 Lake Ellenor Drive  
Orlando, Florida 32809

Phone: 407-858-1420

Fax: 407-858-5517

<http://orange.floridahealth.gov/>

### Sign up for Electronic Health Alerts & Epidemiology Monthly Surveillance Reports

Email Contact Information to:

[CHD48\\_EPIRegistration@flhealth.gov](mailto:CHD48_EPIRegistration@flhealth.gov)



### Issue Contributors

**Ben Klekamp, MSPH, CPH, CIC**

Interim Epidemiology Program Manager

**Jack Tracy, M Ed**

Influenza Surveillance Coordinator

**Jennifer T. Jackson, MPH, CIC**

Epidemiologist

*The Epidemiology Program conducts disease surveillance and investigates suspected occurrences of infectious diseases and conditions that are reported from physician's offices, hospitals, and laboratories.*

*Surveillance is primarily conducted through passive reporting from the medical community as required by Chapter 381, Florida Statutes.*

*Data is collected and examined to determine the existence of trends. In cooperation with the Office of Emergency Operations, the Epidemiology Program conducts syndromic and influenza-like-illness surveillance activities.*

*Syndromic surveillance was added to the disease reporting process as an active method of determining activities in the community that could be early indicators of outbreaks and bioterrorism.*

*Our staff ensures that action is taken to prevent infectious disease outbreaks from occurring in Orange County communities and area attractions. Along with many public and private health groups, we work for the prevention of chronic and long-term diseases in Central Florida.*

**ALL DATA IS PROVISIONAL**