



Epidemiology Monthly Surveillance Report

Florida Department of Health in Orange County

2014: Yearend Overview

Volume 5, Issue 12

Outbreaks Investigated by the Florida Department of Health in Orange County during 2014, by Mode of Transmission and Pathogen Type.

Mode of Transmission	Pathogen Type	Count
Foodborne	Viral	1
	Bacterial	1
	Marine Toxin	1
	Unknown	11
Waterborne	Bacterial	1
	Parasitic	1
Person-to-Person (Enteric)	Viral	3
	Unknown	1
Person-to-Person	Mite	1
Person-to-Person (Respiratory)	Viral	5
Mixed	Viral	2
Total		28

Foodborne Complaints Investigated by the Florida Department of Health in Orange County during 2014, by Facility Regulatory Agency.

Total Complaints	159
Florida Department of Business and Professional Regulation	141
Florida Department of Agriculture and Consumer Services	18

Reportable Disease Table 1 of 3

Disease	Orange County		Florida	
	2014	Mean 5yr Average	2014	Mean 5yr Average
Amebic Encephalitis	0	0.2	2	1
Anthrax	0	0	0	0.2
Arsenic Poisoning	0	0	3	9.2
Botulism, Foodborne	0	0	0	0
Botulism, Infant	0	0	0	0.8
Botulism, Other	0	0	0	0
Botulism, Wound	0	0	0	0
Brucellosis	0	0.6	8	9.8
California Serogroup Virus Neuroinvasive Disease	0	0	0	0.2
California Serogroup Virus Non-Neuroinvasive Disease	0	0	0	0
Campylobacteriosis	100	69.2	2176	1688.6
Carbon Monoxide Poisoning	8	6.4	154	107.2
Cholera (Vibrio cholera, Type O1)	0	0.4	3	5.8
Ciguatera Fish Poisoning	7	0.2	72	40
Creutzfeldt-Jakob Disease (CJD)	0	0.8	13	18.4
Cryptosporidiosis	101	25.8	1892	449
Cyclosporiasis	3	2.6	33	46
Dengue Fever	4	11.6	98	129
Dengue Hemorrhagic Fever	0	0	0	1
Diphtheria	0	0	0	0
Eastern Equine Encephalitis Virus Neuroinvasive Disease	0	0	0	1.8
Eastern Equine Encephalitis Virus Non-Neuroinvasive Disease	0	0	0	0
Ehrlichiosis/Anaplasmosis (E. Ewingii)	0	0	0	0
Ehrlichiosis/Anaplasmosis, HGE (A. Phagocytophilum)	0	0.2	6	5
Ehrlichiosis/Anaplasmosis, HME (E. Chaffeensis)	0	0.8	29	16.6
Ehrlichiosis/Anaplasmosis, Undetermined	0	0	0	0.2
Encephalitis (Other, Non-Arboviral)	0	0.2	3	16.4
Giardiasis	53	82	1074	1508.2
Glanders	0	0	0	0
H. influenzae Invasive Disease	20	11.8	250	233.4
Hansens Disease (Leprosy)	1	0.2	4	8.2
Hantavirus Infection	0	0	0	0
Hemolytic Uremic Syndrome	1	0.4	6	6.6
Hepatitis A	3	8	106	147.4
Hepatitis B, Acute	10	16	414	307.8
Hepatitis B, Chronic	452	386.8	4960	4108.6
Hepatitis B, HBsAg in Pregnant Women	47	62.6	463	467.6
Hepatitis B, Perinatal	0	0.2	0	1
Hepatitis C, Acute	6	10	175	137
Hepatitis C, Chronic	1157	883	22653	17729.8
Hepatitis D	0	0	1	0.4

.....

ALL DATA IS PROVISIONAL

Reportable Disease Table 2 of 3

Disease	Orange County		Florida	
	2014	Mean 5yr Average	2014	Mean 5yr Average
Hepatitis E	0	0.2	3	2.6
Hepatitis G	0	0.2	0	0.4
Influenza A, Novel or Pandemic Strains	0	78.8	0	1088.8
Influenza-Associated Pediatric Mortality	2	0	7	5.6
Lead Poisoning	15	24.4	628	762.8
Legionellosis	24	19.4	299	210.2
Leptospirosis	0	0.6	0	1.8
Listeriosis	4	2.6	45	38.8
Lyme Disease	1	4.2	136	115.4
Malaria	7	9.6	65	93
Measles	0	2.2	0	4.8
Melioidosis	0	0.2	0	0.4
Meningitis (Bacterial, Cryptococcal, Mycotic)	2	11.4	132	185.6
Meningococcal Disease	3	1	49	54.8
Mercury Poisoning	0	0	8	11.4
Middle East Respiratory Syndrome (MERS)	1	0	1	0
Monkey Bite	0	0	8	5
Mumps	0	0.8	1	9.4
Neurotoxic Shellfish Poisoning	0	0	0	0
Pertussis	24	28.4	669	495.6
Pesticide-Related Illness Or Injury	1	5	25	45
Plague, Bubonic	0	0	0	0
Plague, Pneumonic	0	0	0	0
Poliomyelitis	0	0	0	0
Poliomyelitis, Nonparalytic	0	0	0	0
Psittacosis	0	0	1	0
Q Fever, Acute	0	0	2	1.8
Q Fever, Chronic	0	0	0	0
Rabies, Animal	5	7.8	92	121.2
Rabies, Human	0	0	0	0.2
Rabies, Possible Exposure	77	92	2973	2315.8
Ricin Toxin Poisoning	0	0	0	0.2
Rocky Mountain Spotted Fever	0	0.6	16	18.4
Rubella	0	0	0	0
Rubella, Congenital	0	0	0	0
S. aureus Infection, Intermediate Resistance to Vancomycin	0	0	5	4.6
S. aureus, Community-Associated Mortality	0	0.2	1	13.6
S. pneumoniae Invasive Disease, Drug-Resistant	19	37.6	322	648.4
S. pneumoniae Invasive Disease, Drug-Susceptible	26	24.8	450	637.2
Salmonellosis	294	336.2	5946	6353.4

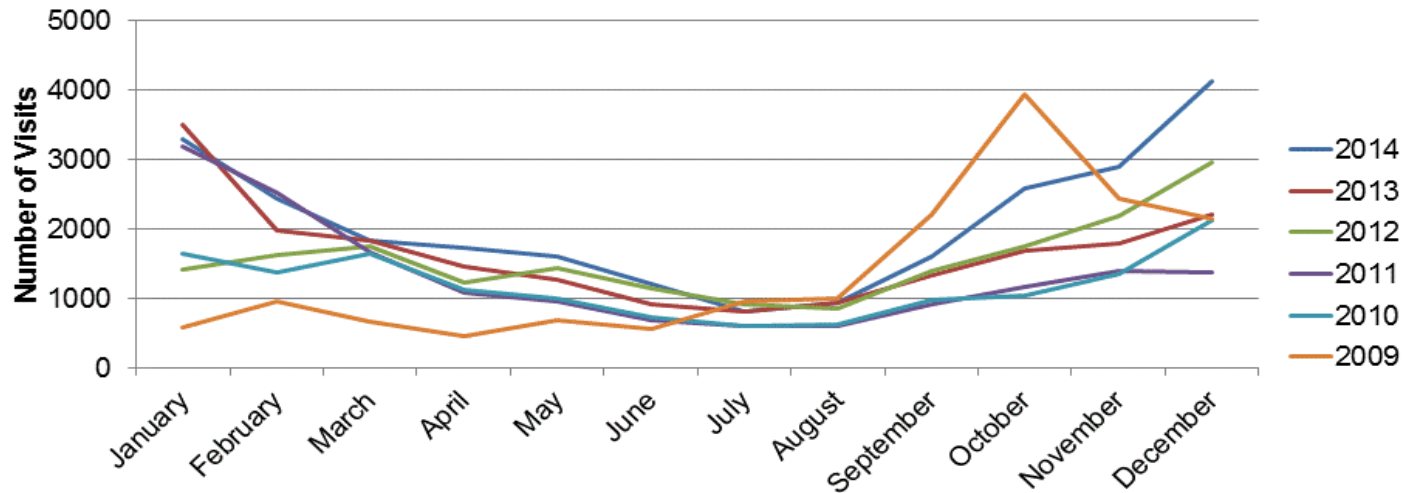
ALL DATA IS PROVISIONAL

Reportable Disease Table 3 of 3

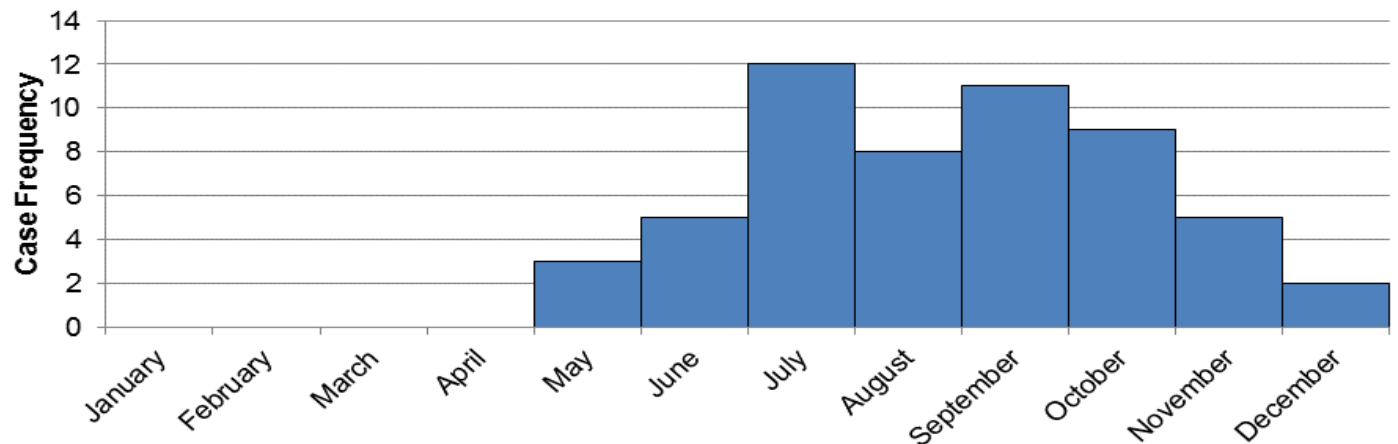
Disease	Orange County		Florida	
	2014	Mean 5yr Average	2014	Mean 5yr Average
Saxitoxin Poisoning (Paralytic Shellfish Poisoning)	0	0	0	0.6
Shiga Toxin-Producing E. coli (STEC) Infection	9	6.6	162	103.2
Shigellosis	200	90.6	2341	1420.6
Smallpox	0	0	0	0
St. Louis Encephalitis Virus Neuroinvasive Disease	0	0	2	0
St. Louis Encephalitis Virus Non-Neuroinvasive Disease	0	0	0	0
Staphylococcus Enterotoxin B Poisoning	0	0	0	0
Streptococcus Invasive Disease (Group A)	7	14.2	172	272
Tetanus	0	0	1	3.8
Toxoplasmosis	1	0.4	9	7.8
Trichinellosis	0	0	0	0
Tularemia	0	0	1	0.4
Typhoid Fever	1	1.4	15	14.4
Typhus Fever, Endemic (R. typhi or R. felis)	0	0	0	0.6
Typhus Fever, Epidemic (R. prowazekii)	0	0	0	0
Vaccinia Disease	0	0	0	0.2
Varicella	19	35.8	570	886.2
Venezuelan Equine Encephalitis Virus Neuroinvasive	0	0	0	0
Venezuelan Equine Encephalitis Virus Non-Neuroinvasive	0	0	0	0
Vibriosis (Other Vibrio Species)	0	0.2	11	8.4
Vibriosis (Vibrio alginolyticus)	0	1.4	66	46.2
Vibriosis (Vibrio cholerae, Type Non-O1)	0	0.4	11	11.2
Vibriosis (Vibrio fluvialis)	0	0	8	7.8
Vibriosis (Vibrio hollisae)	0	0	2	2.4
Vibriosis (Vibrio mimicus)	0	0	9	4
Vibriosis (Vibrio parahaemolyticus)	1	0.4	33	38.2
Vibriosis (Vibrio vulnificus)	1	0.4	35	33.2
Viral Hemorrhagic Fever	0	0	0	0
West Nile Virus Neuroinvasive Disease	0	0.8	13	18.4
West Nile Virus Non-Neuroinvasive Disease	0	0.2	10	6.2
Western Equine Encephalitis Virus Neuroinvasive Disease	0	0	0	0
Western Equine Encephalitis Virus Non-Neuroinvasive Disease	0	0	0	0
Yellow Fever	0	0	0	0
Total	2717	2421	49953	43334.2

Select Disease Trends

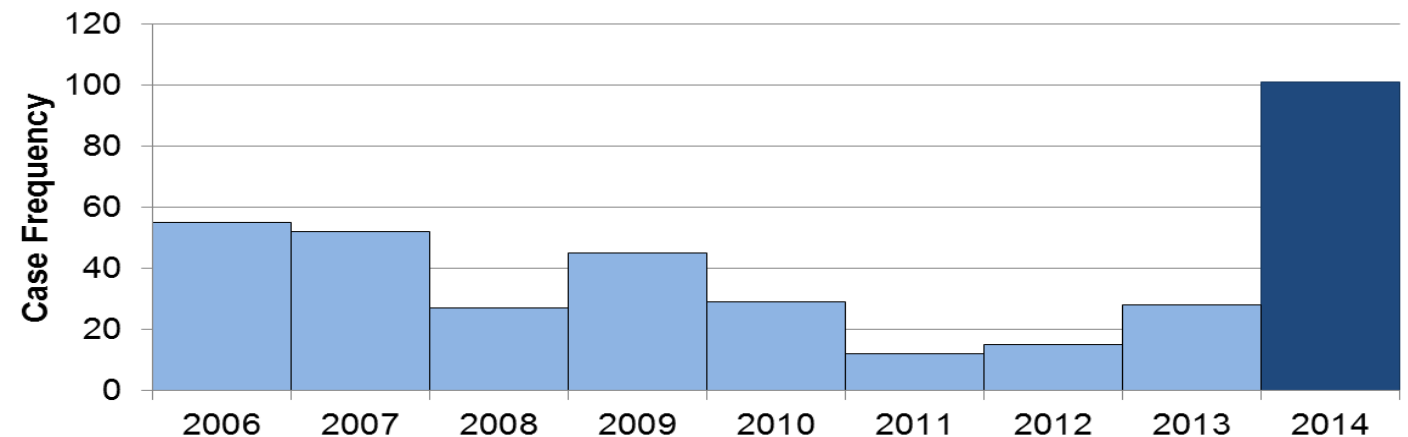
Influenza-like Illness, Emergency Department/Urgent Care Visits, Orange County, Florida, 2009-2014, by Month



Chikungunya Fever Cases, Orange County, Florida, 2014, by Month



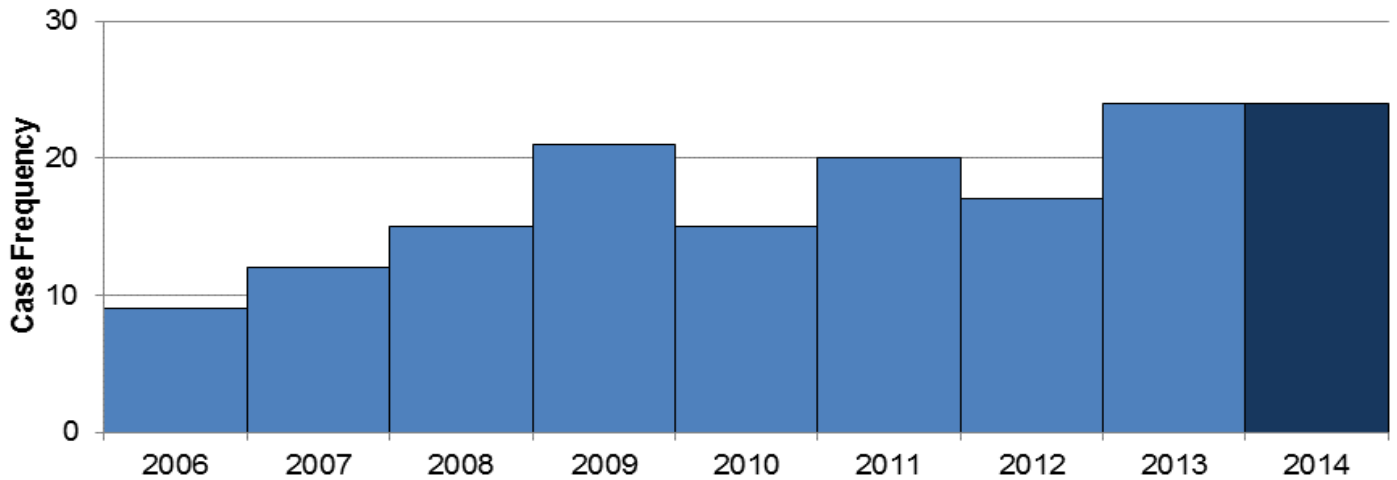
Cryptosporidium Cases, Orange County, Florida 2006-2014, by Year



ALL DATA IS PROVISIONAL

Select Disease Trends Continued...

Legionella Cases in Orange County, Florida, 2006-2014, by Year





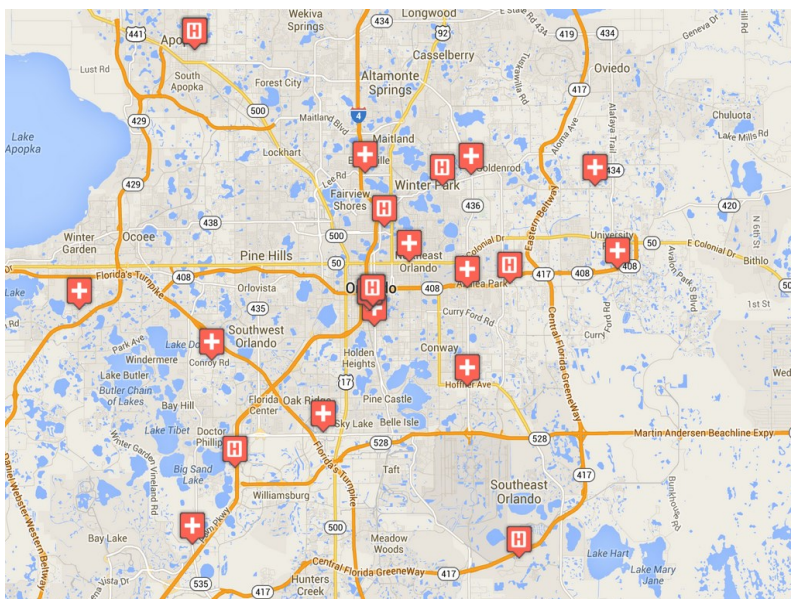
Other Disease Resources

In the structure of DOH-Orange, tuberculosis, sexually transmitted infections, and human immunodeficiency virus are housed in separate programs from the Epidemiology Program. We recognize the importance of these diseases for our community partners and for your convenience have provided links for surveillance information on these diseases in [Florida](#) and [Orange County](#).



Florida Department of Health: ESSENCE

-  Hospital linked to ESSENCE
-  Florida Hospital Centra Care Clinic linked to ESSENCE



Since 2007, the Florida Department of Health has operated the Early Notification of Community-based Epidemics (ESSENCE), a state-wide electronic bio-surveillance system. The initial scope of ESSENCE was to aid in rapidly detecting adverse health events in the community based on Emergency Department (ED) chief complaints. In the past seven years, ESSENCE capabilities have continually evolved to currently allow for rapid data analysis, mapping, and visualization across several data sources, including ED record data, Merlin reportable disease data, Florida Poison Information Network consultations, and Florida Office of Vital Statistics death records. The majority of the information presented in this report comes from ESSENCE. Florida currently has 186 emergency departments and 30 urgent care centers (Florida Hospital Centra Care) reporting to ESSENCE-FL for a total of 216 facilities.

ALL DATA IS PROVISIONAL

Florida Department of Health in Orange

Epidemiology Program
6101 Lake Ellenor Drive
Orlando, Florida 32809

Phone: 407-858-1420
Fax: 407-858-5517
<http://orange.floridahealth.gov/>
www.ORCHD.mobi

Sign up for Electronic Health Alerts & Epidemiology Monthly Surveillance Reports

Email Contact Information to:

CHD48_EPIRegistration@flhealth.gov



Issue Contributors

Sarah Matthews, MPH
Epidemiology Program Manager

Ben Klekamp, MSPH, CPH
Epidemiologist

Debra Mattas, BS
Epidemiologist

Jack Tracy, M Ed
Influenza Surveillance Coordinator

Toni Hudson, MSPH
Florida Epidemic Intelligence Service Fellow

Charlene McCarthy
Administrative Assistant

The Epidemiology Program conducts disease surveillance and investigates suspected occurrences of infectious diseases and conditions that are reported from physician's offices, hospitals, and laboratories.

Surveillance is primarily conducted through passive reporting from the medical community as required by Chapter 381, Florida Statutes.

Data is collected and examined to determine the existence of trends. In cooperation with the Office of Emergency Operations, the Epidemiology Program conducts syndromic and influenza-like-illness surveillance activities.

Syndromic surveillance was added to the disease reporting process as an active method of determining activities in the community that could be early indicators of outbreaks and bioterrorism.

Our staff ensures that action is taken to prevent infectious disease outbreaks from occurring in Orange County communities and area attractions. Along with many public and private health groups, we work for the prevention of chronic and long-term diseases in Central Florida.

ALL DATA IS PROVISIONAL